

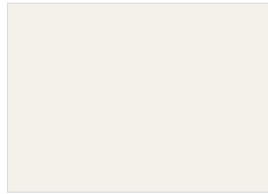
## Cubicle & Washroom Colour Selection



**A036** *Apple Green*



**B001** *Royal Blue*



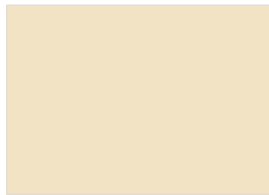
**B015** *White*



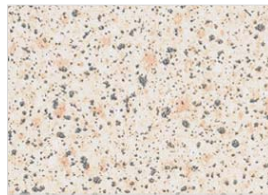
**B048** *Sky Blue*



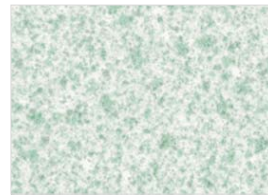
**B086** *Caribbean Blue*



**C017** *Cream*



**C030** *Cosmic Sand*



**C031** *Cosmic Green*



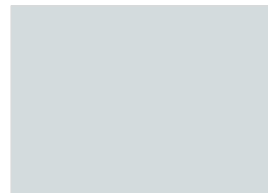
**C032** *Cosmic Rose*



**C062** *Red*



**G003** *Pearl Grey*



**G029** *Silver Grey*



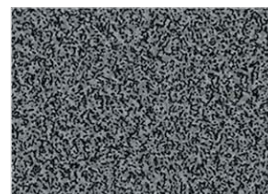
**G031** *Yellow*



**\*H025** *Applewood*



**M001** *Flint*



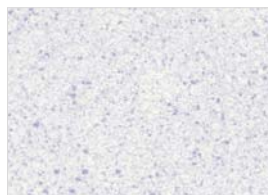
**\*M003** *Ebony Mist*



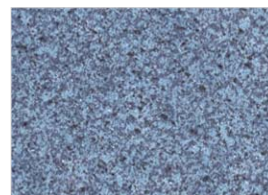
**M047** *Aqua*



**M077** *Summer Zest*



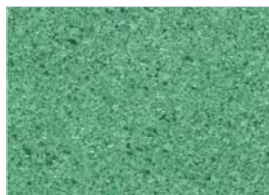
**N022** *Lilac Mist*



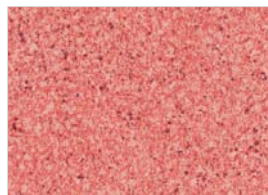
**N023** *Sapphire Mist*



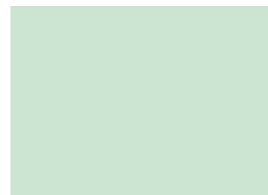
**\*N026** *Walnut*



**N028** *Irish Mist*



**N049** *Autumn Mist*



**V011** *Peppermint*

2009-2012

### Panoprey

19mm  
 Melamine Faced  
 Chipboard

### Polyrey

0.8mm  
 High Pressure  
 Laminate

### Polyrey

12.5mm  
 Standard  
 Compact Grade  
 Laminate

### Polyrey

10mm  
 Postforming  
 Compact Grade  
 Laminate

# cubicle & washroom collection

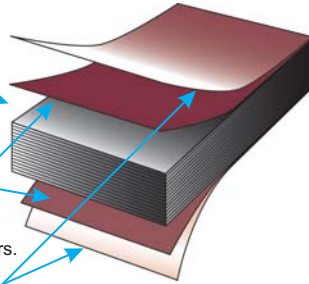
**Polyrey High Pressure Laminate, Polyrey Compact Solid Grade Laminate and Panoprey Melamine Faced Chipboard – A complete product offer to meet the requirements of most applications within a cubicle and washroom environment (cubicles, partitions, lockers).**

## Compact Solid Grade Laminate

Black core composed of kraft papers impregnated with phenolic resin.

Decorative paper impregnated with melamine resin.

Protective surface impregnated with melamine resin (overlay) for printed decors.



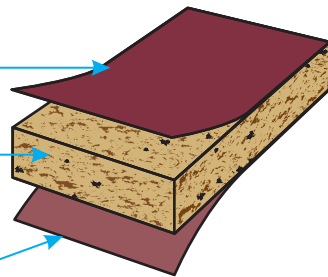
- Exceptional resistance to water and impact.
- The ideal product for demanding, high traffic environments such as swimming pools, changing rooms and shower areas.
- Meets the highest hygiene and sterility requirements due to its non-porous edges and inert surface. Allows for easy cleaning and maintenance.

## Panoprey MFC Melamine Faced Chipboard

Decorative paper impregnated with melamine resin.

Chipboard core.

Decorative paper impregnated with melamine resin.



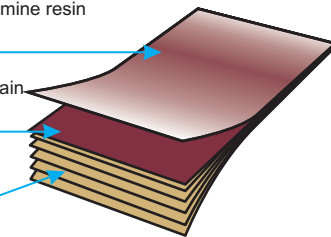
- Chipboard with 2 melamine faces offering high resistance to humidity.
- Moisture resistant grade offering a higher resistance to humidity
- Cost-effective solution for all non-wet area applications.
- All decors available in HPL for vanity units.

## Polyrey HPL High Pressure Laminate

Protective surface impregnated with melamine resin (overlay) for printed decors.

Decorative paper, printed or deep dyed plain colour, impregnated with melamine resin.

Layers of kraft paper impregnated with phenolic resin.



- High impact and scratch resistance.
- 4+ metre sheets for cubicle partitions up to 166cm deep (Disability Discrimination Act 2004).
- 366 x 151cm sheets available for standard size 180 x 150cm partitions.

## Building Regulations Part M / Disability Discrimination Act

The Building Regulations Part M, in conjunction with the Disability Discrimination Act 2004, detail the need for certain surfaces with the cubicle and washroom environment to contrast visually within set parameters.

The current legislation requires that jointing surfaces have a difference of 30 points between their Light Reflectance Value.

While responsibility lies with the specifiers to select decors that ensure compliance, the table shows luminescence values by decor which will enable system manufacturers to offer guidance if requested.

Ref	Decor Name	LVal	Ref	Decor Name	LVal
A036	Apple Green	0.58	G031	Yellow	0.58
B001	Royal Blue	0.15	H025	Applewood	0.46
B015	White	0.87	M001	Flint	0.55
B048	Sky Blue	0.52	M003	Ebony Mist	0.13
B086	Caribbean Blue	0.10	M047	Aqua	0.34
C017	Cream	0.68	M077	Summer Zest	0.58
C030	Cosmic Sand	0.57	N022	Lilac Mist	0.54
C031	Cosmic Green	0.59	N023	Sapphire Mist	0.23
C032	Cosmic Rose	0.57	N026	Walnut	0.17
C062	Red	0.19	N028	Irish Mist	0.33
G003	Pearl Grey	0.41	N049	Autumn Mist	0.31
G029	Silver Grey	0.53	V011	Peppermint	0.66