

**excelsior**<sup>®</sup>  
washrooms for all environments

## Flush44 Cubicle Range

WASHROOMS FOR ALL ENVIRONMENTS



# Flush44 Cubicle Range

## The premium flush fronted cubicle solution

The Flush 44 cubicle range is the genuine 'premium quality' system, offering a sleek flush fronted facade, with surface finishes available in both HPL and Natural Veneer complete with hardwood edges to doors. Allowing the the most discerning specifier complete satisfaction in their selection.

At Excelsior we offer the Flush44 in three standard formats:

1. 2100mm overall proprietary height incorporating a 150mm pedestal leg and SAA box headrail.
2. Full height up to 2700mm as standard floor to ceiling option with 38mm divisions set into a 'U' section floor channel.
3. Full height 2700mm as standard floor to ceiling option with back to back duct panel divisions offering a 100mm service void.

All three formats incorporate Stainless Steel Ironmongery as Standard and are DDA compliant with outward opening

doors complete with 'D' handles to ease access where doors are set to fall closed.

Flush44 is available in several different surface finishes including High Pressure Laminate and Natural Wood Veneers complete with rebated Hardwood edges to all doors and pilasters.

Typical manufacturing period is 5-6 weeks from receipt of approved drawings and colour selection.

Installation by Excelsior is strongly recommended but not essential as a full set of fixing instructions and technical information is provided with the system.



### Ironmongery

1. Butterfly Turn
2. Indicator Faceplate
3. Rise & Fall Hinge



# Flush44 Specifications

## Flush 44 Cubicle (Floor to Ceiling)

### Specifications

#### Doors and Pilasters:

- High Pressure Laminate PUR bonded onto 44mm MR core
- Rebated Hardwood Edges, sealed 2 coats AC Lacquer

#### Continuous Head Section:

- High Pressure Laminate bonded onto 44mm MR core
- Hardwood Edges, sealed 2 coats AC Lacquer

*Natural veneers, digital print HPL and gloss HPL available at additional cost*

#### Divisions Specification:

- High Pressure Laminate PUR bonded onto 36mm MR core
- Matching Laminate edge detail

#### Standard Dimensions:

- Upto 2700mm overall height x 1500mm deep (partitions to be jointed for manual handling)

#### Ironmongery:

- Continuous 'T' section Pilaster fixing channel
- Royde & Tucker D-Line Stainless Steel rise and fall hinges
- D-Line Eisenware Butterfly Turn and Release Deadbolt (4871.01) with Excelsior Wrap striking plate/keep
- 38mm 'U' section SAA floor channel
- Hat & Coat hook 65mm c/w buffer T501
- Rear Wall 'T' section division fixing channel
- 3mm door/pilaster cushion gasket

*Toilet Roll Holders & Accessories available upon request.*

## Flush 44 Cubicle (2100mm High)

### Specifications

#### Doors and Pilasters:

- High Pressure Laminate PUR bonded onto 44mm MR core
- Rebated Hardwood Edges, sealed 2 coats AC Lacquer

*Natural veneers, digital print HPL and gloss HPL available at additional cost*

#### Divisions Specification:

- High Pressure Laminate PUR bonded onto 18mm MR core
- Matching Laminate edge detail

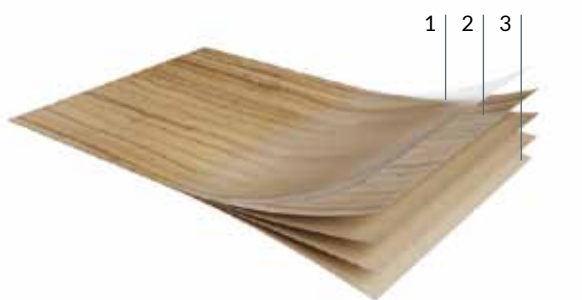
#### Standard Dimensions:

- 2100mm overall height x 1500mm deep. C/W 150mm leg

#### Ironmongery:

- Continuous 'T' section Pilaster fixing channel
- Royde & Tucker D-Line Stainless Steel rise and fall hinges
- D-Line Eisenware Butterfly Turn and Release Deadbolt (4871.01 with Excelsior Wrap striking plate/keep
- Leg 150mm - Ref: EXL - A150 SBAA Finish
- Hat & Coat hook 65mm c/w buffer T501
- Rear Wall 'T' section division fixing channel
- 3mm door/pilaster cushion gasket
- Headrail - T-Line 38mm U Section headrail SAA
- Headrail End Caps - Ref: 38mm end

*Toilet Roll Holders & Accessories available upon request.*



1. Protective overlay for printed decors.
2. Decorative paper impregnated with melamine resin.
3. Layers of kraft paper impregnated with phenolic resin, to be bonded onto MR core.

## HPL - High Pressure Laminate

High pressure laminate (bonded onto a chipboard or MDF substrate. These core materials offer water resistance only (they are not waterproof) offers heat, scratch and impact resistance with edges finished with a colour match or contrast 2mm PVC detail.

Comfortable in school, office, entertainment, health and retail environments alike.

**Ironmongery Finish:** Stainless Steel as standard.

**Colour Selections:** Excelsior preferred cubicle & washroom colour selection or natural veneer.

**Special Notes:** Outward opening doors complete with back to back Stainless Steel 'D' Handles.

**N.B.** Hardwood edges will be light oak as standard which may result in a colour variance to the face.

**We recommend that outward opening doors open onto an adjacent solid wall to prevent overstrain on hinges.**

# BIM Objects - Typical Layout

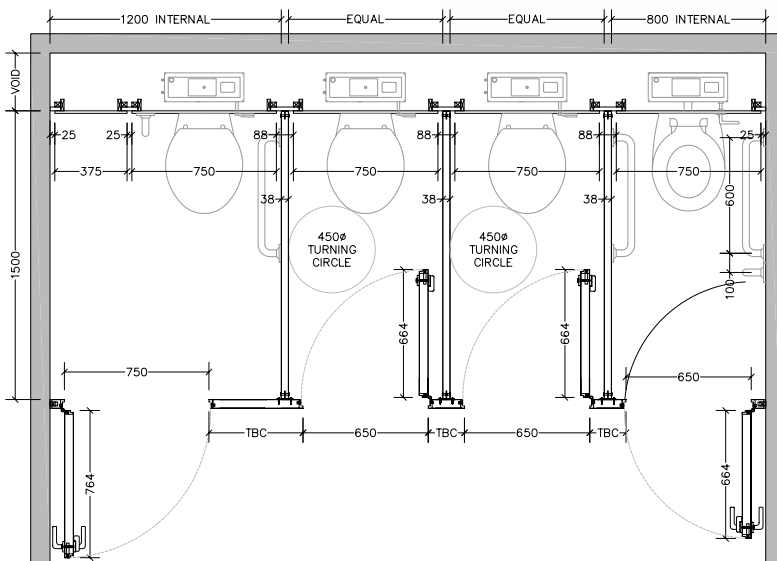
## Downloadable BIM Objects

Our BIM Families are a time saving development with fully functional parametric objects. This highly acclaimed 3D model-based process is specifically designed for Infrastructure and Building projects. It offers many benefits to owners that enable simplicity for project management.

- Visualisation of designs
- Simulation of multiple design ideas
- Productivity improvement
- Analysing and testing of application and performance

BIM enables collaborative working; management of information as 'one team' within a digital model holding all the information required to design and construct the project from conception to completion.

If you would like to register and download our BIM families please visit our website [www.excelsior-cubicles.co.uk/bim-objects](http://www.excelsior-cubicles.co.uk/bim-objects)



From creation to installation...  
you can rest assured

Excelsior have undertaken the manufacture, supply and installation of bespoke washroom products in all washroom environments since 1978. We have a wide selection of safe, attractive and reliable systems to suit all applications, from Nursery Schools right through to Leisure Centres and Hospitals.

**excelsior**<sup>®</sup>  
washrooms for all environments

**Excelsior Panelling Systems Ltd**  
Unit 2, Woodside Industrial Estate, Pedmore Road, Dudley, West Midlands, DY2 0RL

**Tel:** +44 (0)1384 267770 **Fax:** +44 (0)1384 482127  
**E-mail:** [enquiries@excelsiorps.co.uk](mailto:enquiries@excelsiorps.co.uk) **Web:** [www.excelsior-cubicles.co.uk](http://www.excelsior-cubicles.co.uk)

