

excelsior[®]
washrooms for all environments

Hydroline Cubicle Range

WASHROOMS FOR ALL ENVIRONMENTS



Hydroline Cubicle Range

A robust high performance self supported system

The only choice for the serious leisure operator, cost effective, low maintenance, long life span (in excess of ten years) and above all good looks.

The Hydroline fully framed cubicle system has been specially designed for use in demanding municipal changing areas, washrooms and public toilets. Combining clean lines with extreme strength, the cubicles are very effective against the daily wear and tear associated with high use areas.

Hydroline has been engineered from the highest quality aluminium extrusions and is designed to be used in conjunction with 12mm Compact Grade Laminate panels. The stylish design, combined with strong framework and panels, makes the system extremely robust and ideal for all wet or dry public environments.

Hydroline is available in a variety of durable powder coated colours, which ensures the system is suitable for a variety of projects. The system also offers a unique anti-finger trap door design, which is essential for areas where children of all ages are left to enjoy themselves. The cubicles also feature vandal resistant doorframes, with anti-lift off, heavy duty hinges that will withstand the most punishing environments.



Ironmongery

1. Leg Detail
2. Indicator Faceplate
3. Headrail Endcap
4. D Handle



1.



2.



3.



4.

Ironmongery Finish: RAL 9016 White; RAL 9001 Pearl White; RAL 9011 Black; RAL BS; 00A05 Steel Silver.

Hydroline Specifications

Hydroline Tubular Framed 12mm SGL Cubicles

Specifications

Doors, Divisions, Pilaster & Infills:

- 12mm Compact Solid Grade Laminate
- Black core radius & polished edge finish

Standard Dimensions:

- 2010mm overall height (c/w 150mm leg) x 1500mm
- Increased height radius profiled divisions (upto 2600mm high) available at additional cost

Framework Detail:

- Hydroline is a fully framed tubular system manufactured from non-corrosive materials suitable for wet and dry areas

Framework Colour Options:

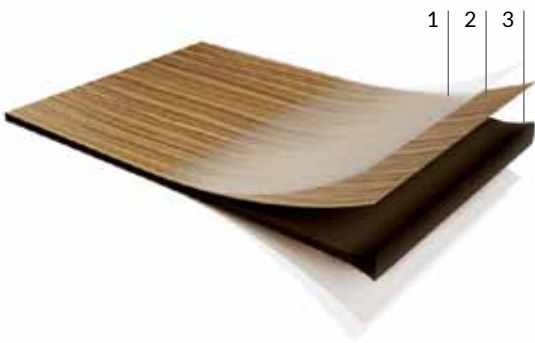
- RAL 9016 White; RAL 9001 Pearl White; RAL 9011 Black; BS00A05 Steel Silver

Ironmongery:

- Rise and fall extruded channel continuous hinge
- Snib Turn Indicator. Ref: I89P1213
- Pilaster extrusion incorporating 150mm Leg
- Coat Hook
- Continuous wall channel Brackets
- 60mm Headrail
- Headrail End Caps

Toilet Roll Holders & Accessories

available upon request.



1. Protective overlay for printed decors.
2. Decorative paper on both sides impregnated with melamine resin.
3. Multiple layers of kraft paper impregnated with phenolic resin, to form a rigid exposed core with a radiused, polished edge.

SGL - Compact Solid Grade Laminate

Solid Grade Laminate is extremely resistant to water penetration and impact damage. Nominally 12mm in sheet thickness with radiused and polished solid black edges.

Ideal for use in the harshest of environments such as schools and leisure centres.

Ironmongery Finish: RAL 9016 White; RAL 9001 Pearl White; RAL 9011 Black; RAL BS; 00A05 Steel Silver.

Colour Selections: Excelsior preferred cubicle & washroom colour selection.

Anti-peep rails to tops of cubicles available at an additional cost.

Special Notes: Outward opening doors complete with back to back aluminium 'D' Handles.

Increased height radius profiled divisions (upto 2600mm high) available at an additional cost.

We recommend that outward opening doors open onto an adjacent solid wall to prevent overstrain on hinges.

BIM Objects - Typical Layout

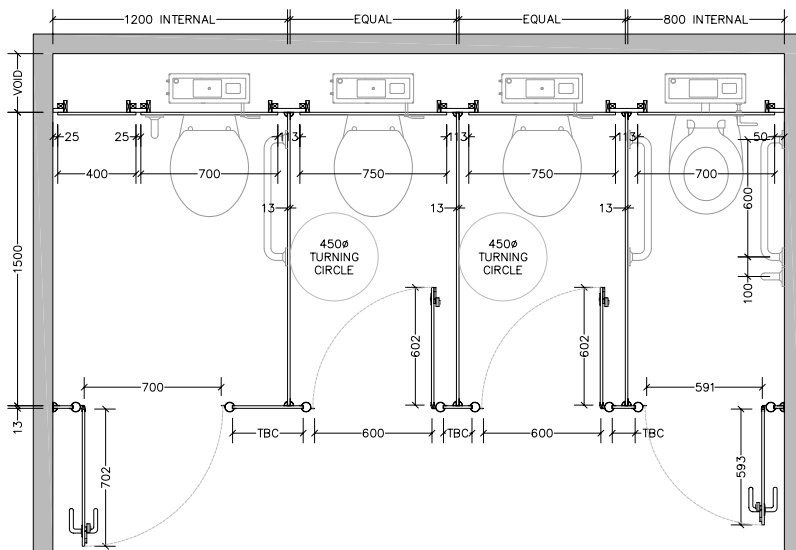
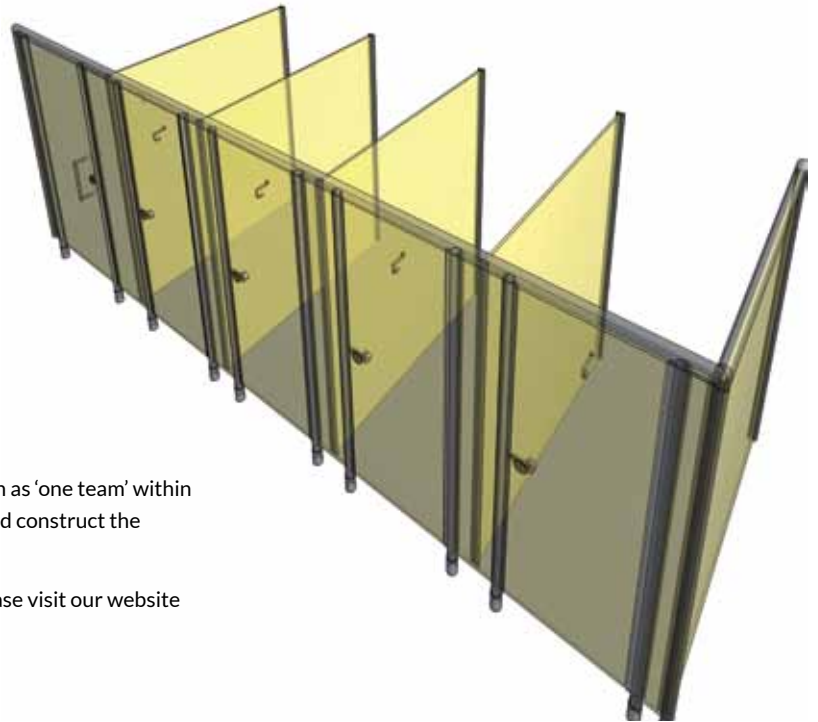
Downloadable BIM Objects

Our BIM Families are a time saving development with fully functional parametric objects. This highly acclaimed 3D model-based process is specifically designed for Infrastructure and Building projects. It offers many benefits to owners that enable simplicity for project management.

- Visualisation of designs
- Simulation of multiple design ideas
- Productivity improvement
- Analysing and testing of application and performance

BIM enables collaborative working; management of information as 'one team' within a digital model holding all the information required to design and construct the project from conception to completion.

If you would like to register and download our BIM families please visit our website www.excelsior-cubicles.co.uk/bim-objects



From creation to installation...
you can rest assured

Excelsior have undertaken the manufacture, supply and installation of bespoke washroom products in all washroom environments since 1978. We have a wide selection of safe, attractive and reliable systems to suit all applications, from Nursery Schools right through to Leisure Centres and Hospitals.

excelsior[®]
washrooms for all environments

Excelsior Panelling Systems Ltd
Unit 2, Woodside Industrial Estate, Pedmore Road, Dudley, West Midlands, DY2 0RL

Tel: +44 (0)1384 267770 **Fax:** +44 (0)1384 482127
E-mail: enquiries@excelsiorps.co.uk **Web:** www.excelsior-cubicles.co.uk

