

excelsior[®]
washrooms for all environments

Senator Cubicle Range

WASHROOMS FOR ALL ENVIRONMENTS



Senator Cubicle Range

An elegant and prestigious framed system

The Senator range is a perfect solution where the client requires a 'touch of class' and is equally at home in all environments ranging from prestigious office developments, schools, colleges and leisure facilities. Extruded aluminium profiles and colour co-ordinated panels, produce a most striking visual effect.

SENATOR's design allows inward and outward opening cubicles to be placed side by side. This provides the ability to incorporate DDA cubicles without altering the external appearance. The SENATOR indicator bolt is also easily operated by people of all ages and abilities.

Profiles are available in a wide choice of colours and combined with a multitude of laminates, melamine's, solid laminates, textures and patterns, SENATOR remains the most versatile, adaptable system on the market.

Non-standard powder coated hardware finishes can be supplied

which may incur additional cost. Wall & duct panelling and fully framed vanity units can be supplied to complement this system. The Senator range is available on a typical delivery period of 3-4 weeks from receipt of approved drawings and confirmation of all colour finishes.

Installation by Excelsior is strongly recommended but not essential as a full set of fixing instructions and technical information is provided with the system.



Aluminium Ironmongery

1. Indicator Faceplate
2. Indicator Slide Bolt
3. Aluminium Leg
4. Aluminium Hinge



1.



2.



3.



4.

Senator Specifications

Senator 12mm SGL Cubicles

Specifications

Pilasters & Headrail:

- Elliptically profiled Extruded Aluminium SAA as standard
- Hybrid & Nickel powder finishes available upon request

Doors & Divisions Panel Specification:

- 12mm Compact Solid Grade Laminate
- Black core radius & polished edge finish

Standard Dimensions:

- 2000mm overall height (including 150mm ground clearance) x 1500mm deep

Ironmongery:

- Rise & fall aluminium hinges
Ref: EXH-A13
- Indicator & Keep - Ref: EXL-A13
- Leg 150mm - Ref: EXL-A150
- Coat Hook - Ref: EXCH-A13
- Brackets - Ref: EXB-A3/7

Toilet Roll Holders & Accessories available upon request.

Senator 20mm HPL Cubicles

Specifications

Pilasters & Headrail:

- Elliptically profiled Extruded Aluminium SAA as standard
- Hybrid & Nickel powder finishes available upon request

Doors & Divisions Panel Specification:

- HPL bonded onto 18mm MR core
- 2mm ABS edge finish

Standard Dimensions:

- 2000mm overall height (including 150mm ground clearance) x 1500mm deep

Ironmongery:

- Rise & fall aluminium hinges
Ref: EXH-A20
- Indicator & Keep - Ref: EXL-A20
- Leg 150mm - Ref: EXL-A150
- Coat Hook - Ref: EXCH-A20
- Brackets - Ref: EXB-A3/5

Toilet Roll Holders & Accessories available upon request.

Senator 19mm MFC Cubicles

Specifications

Pilasters & Headrail:

- Elliptically profiled Extruded Aluminium SAA as standard
- Hybrid & Nickel powder finishes available upon request

Doors & Divisions Panel Specification:

- 19mm Melamine Faced Chipboard
- 2mm ABS edge finish

Standard Dimensions:

- 2000mm overall height (including 150mm ground clearance) x 1500mm deep

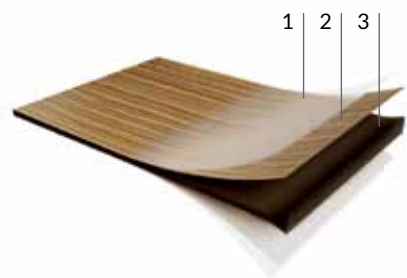
Ironmongery:

- Rise & fall aluminium hinges
Ref: EXH-A20
- Indicator & Keep - Ref: EXL-A20
- Leg 150mm - Ref: EXL-A150
- Coat Hook - Ref: EXCH-A20
- Brackets - Ref: EXB-A3/5

Toilet Roll Holders & Accessories available upon request.

SGL

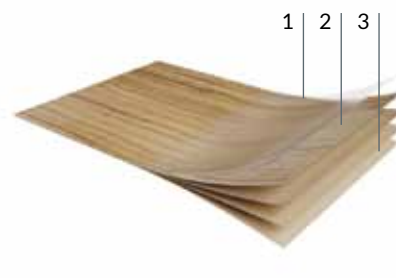
Compact Solid Grade Laminate



1. Protective overlay for printed decors.
2. Decorative paper on both sides impregnated with melamine resin.
3. Multiple layers of kraft paper impregnated with phenolic resin, to form a rigid exposed core with a radiused, polished edge.

HPL

High Pressure Laminate



1. Protective overlay for printed decors.
2. Decorative paper impregnated with melamine resin.
3. Layers of kraft paper impregnated with phenolic resin, to be bonded onto MR core.

MFC

Melamine Faced Chipboard



1. Decorative paper on both sides impregnated with melamine resin.
2. Chipboard core.

Ironmongery Finish: As specification options above (available with powder coated indicator faceplates if extrusions are powder coated).

Colour Selections: Excelsior preferred cubicle & washroom colour selection.

Special Notes: Outward opening doors complete with back to back Aluminium 'D' Handles and full length 'Z' Section door Stop/Keep

We recommend that outward opening doors open onto an adjacent solid wall to prevent overstrain on hinges.

BIM Objects - Typical Layout

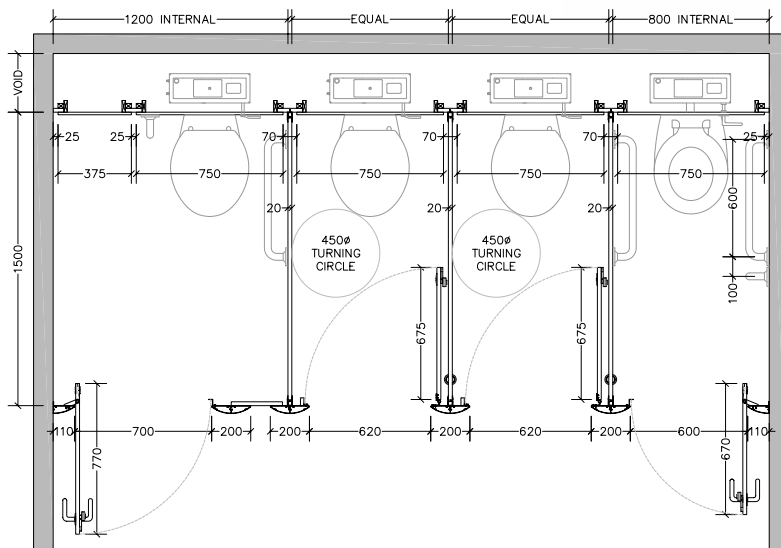
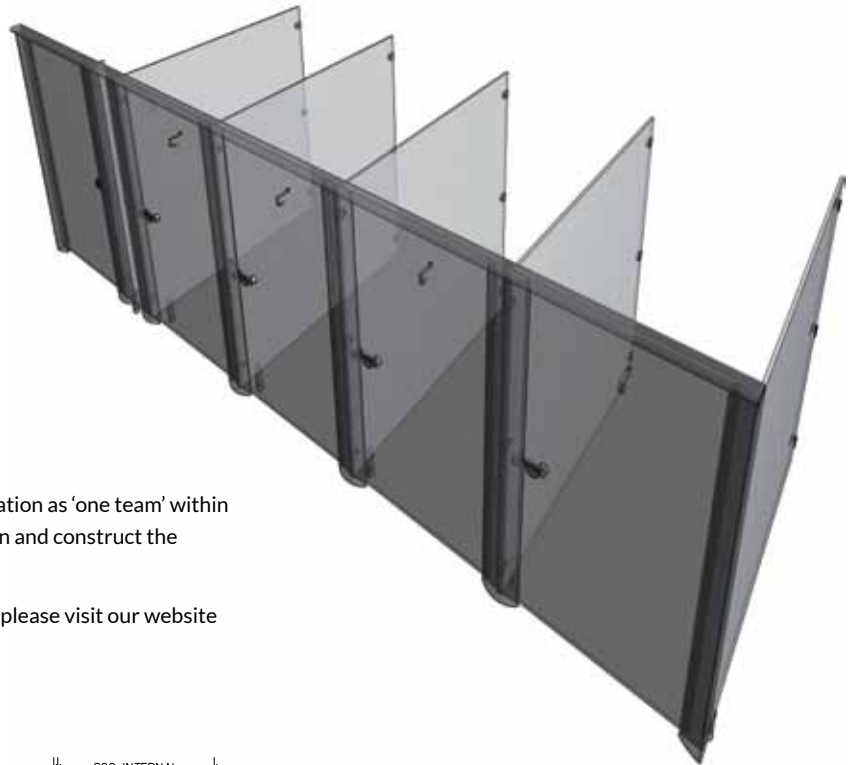
Downloadable BIM Objects

Our BIM Families are a time saving development with fully functional parametric objects. This highly acclaimed 3D model-based process is specifically designed for Infrastructure and Building projects. It offers many benefits to owners that enable simplicity for project management.

- Visualisation of designs
- Simulation of multiple design ideas
- Productivity improvement
- Analysing and testing of application and performance

BIM enables collaborative working; management of information as 'one team' within a digital model holding all the information required to design and construct the project from conception to completion.

If you would like to register and download our BIM families please visit our website www.excelsior-cubicles.co.uk/bim-objects



From creation to installation...
you can rest assured

Excelsior have undertaken the manufacture, supply and installation of bespoke washroom products in all washroom environments since 1978. We have a wide selection of safe, attractive and reliable systems to suit all applications, from Nursery Schools right through to Leisure Centres and Hospitals.

excelsior[®]
washrooms for all environments

Excelsior Panelling Systems Ltd
Unit 2, Woodside Industrial Estate, Pedmore Road, Dudley, West Midlands, DY2 0RL

Tel: +44 (0)1384 267770 **Fax:** +44 (0)1384 482127
E-mail: enquiries@excelsiorps.co.uk **Web:** www.excelsior-cubicles.co.uk



Look for FSC Certified products

