

# excelsior®

washrooms for all environments

## Duct Panelling Range

WASHROOMS FOR ALL ENVIRONMENTS



*His/Her or Hool oi.,,  
Top Ikctss Pa.MI*

Flash Gap

Butt Joint

Fixed Mid  
Access Panel

Skirting

# Duct Panelling Range

## The complete pre-hung duct panelling solution

At Excelsior we offer fully framed, pre-hung washroom duct and wall panel systems with all face panels factory mounted onto either timber or aluminium subframe systems. (To suit environment conditions)

Duct panelling comes in differing configurations and covers a multitude of functionalities.

Washroom duct panelling provides a practical and functional choice for hiding pipework, cables, wastes etc. Not only are these services aesthetically hidden they are also accessible with options of secret fixed lift off panels and hinged keyed access panels.

The smooth finish of the panels provides a hygienic and easy to clean surface.

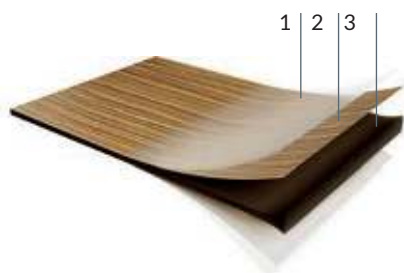
As with all our systems the core material is paramount and must be suitable for its intended environment.

We offer High Pressure Laminate, Compact Density Fibre Board & Solid Grade Laminate. With almost 40 years manufacturing in the industry our team are experts in advising customers on the most suitable material for the intended use.

All of our Duct assemblies are bespoke manufactured to suit individual requirements and to accommodate sanitaryware and DDA provision.

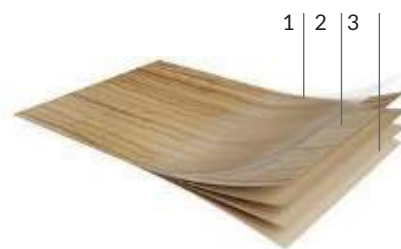


### SGL Compact Solid Grade Laminate



1. Protective overlay for printed decors.
2. Decorative paper on both sides impregnated with melamine resin.
3. Multiple layers of kraft paper impregnated with phenolic resin, to form a rigid exposed core with a radiused, polished edge.

### HPL High Pressure Laminate



1. Protective overlay for printed decors.
2. Decorative paper impregnated with melamine resin.
3. Layers of kraft paper impregnated with phenolic resin, to be bonded onto MR core.

### MFC Melamine Faced Chipboard



1. Decorative paper on both sides impregnated with melamine resin.
2. Chipboard core.

# Duct Panelling Specifications

## Mariner 12mm SGL Range Duct Panelling (Wood Frame)

### Specifications

#### Full Height Panel Specification:

- 12mm Compact Solid Grade Laminate
- Black core radius & polished edge finish
- Panels split to suit sanitaryware

#### Plinth/Shadowgaps:

##### Dry Areas:

- High Pressure Laminate bonded onto 18mm MR MDF
- Plinth incorporates 1mm ABS edge detail at floor junction to prevent moisture ingress
- All remaining edges as cut

##### Wet Areas:

- 12mm Compact Solid Grade Laminate
- Black core edges as cut

#### Frame Construction/System Support:

- Sole Plate - 25mm WBP plywood (to be packed level)
- Subframe - 18/36mm MR MDF/WBP plywood pre-assembled frame
- Panels pre-hung onto subframe using steel hook on clips and nylon push fit clips as required
- Hinged access panels c/w keyed budget lock available at additional cost

#### Special Notes:

- Excelsior Aluminium Frame System available upon request.
- Excelsior standard support systems may not be compatible with all sanitary flushing systems, therefore please enquire prior to placing order to ensure adaptations can be incorporated

## Select 20mm HPL Range Duct Panelling (Wood Frame)

### Specifications

#### Full Height Panel Specification Options:

- (a) **Select** - High Pressure Laminate PUR bonded onto 18mm MR MDF with 2mm ABS edges
- (b) **Select Plus** - High Pressure Laminate PUR bonded onto 18mm MR MDF with postformed vertical edges
- (c) **Select Veneer** - Natural Wood Veneer bonded onto 18mm MR MDF with matching hardwood edges.
- Panels split to suit sanitaryware

#### Plinth/Shadowgaps:

- High Pressure Laminate PUR bonded onto 18mm MR MDF
- Plinth incorporates 1mm ABS edge detail at floor junction to prevent moisture ingress
- All remaining edges as cut

#### Frame Construction/System Support:

- Sole Plate - 25mm WBP plywood (to be packed level)
- Subframe - 18/36mm MR MDF/WBP plywood pre-assembled frame
- Panels pre-hung onto subframe using steel hook on clips and nylon push fit clips as required
- Hinged access panels c/w keyed budget lock available at additional cost

#### Special Notes:

- Excelsior Aluminium Frame System available upon request.
- Excelsior standard support systems may not be compatible with all sanitary flushing systems, therefore please enquire prior to placing order to ensure adaptations can be incorporated

## Option 19mm MFC Range Duct Panelling (Wood Frame)

### Specifications

#### Full Height Panel Specification:

- 19mm Melamine Faced Chipboard
- Matching or contrasting 2mm ABS edge finish
- Panels split to suit sanitaryware

#### Plinth/Shadowgaps:

- 19mm Melamine Faced Chipboard
- Plinth incorporates 1mm ABS edge detail at floor junction to prevent moisture ingress
- All remaining edges as cut

#### Frame Construction/System Support:

- Sole Plate - 25mm WBP plywood (to be packed level)
- Subframe - 18/36mm MR MDF/WBP plywood pre-assembled frame
- Panels pre-hung onto subframe using steel hook on clips and nylon push fit clips as required
- Hinged access panels c/w keyed budget lock available at additional cost

#### Special Notes:

- Excelsior Aluminium Frame System available upon request.
- Excelsior standard support systems may not be compatible with all sanitary flushing systems, therefore please enquire prior to placing order to ensure adaptations can be incorporated

Colour Selections: Excelsior preferred cubicle & washroom colour selection.

Excelsior Aluminium Frame System available for wet and dry areas to suit clients requirements

# BIM Objects - Typical Layout

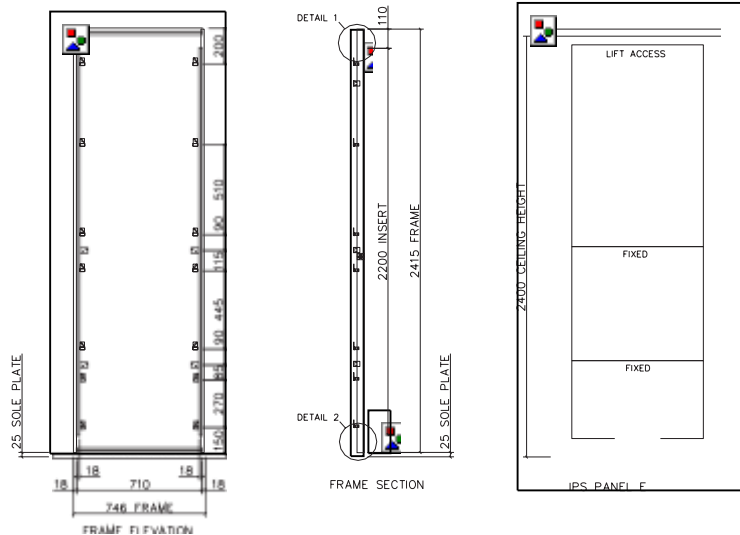
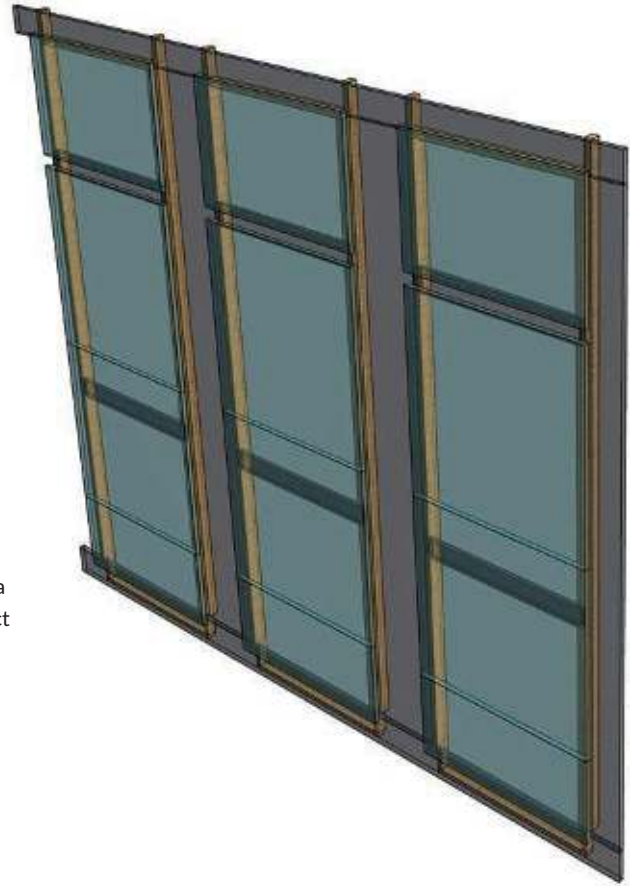
## Downloadable BIM Objects

Our BIM Families are a time saving development with fully functional parametric objects. This highly acclaimed 3D model-based process is specifically designed for Infrastructure and Building projects. It offers many benefits to owners that enable simplicity for project management.

- Visualisation of designs
- Simulation of multiple design ideas
- Productivity improvement
- Analysing and testing of application and performance

BIM enables collaborative working; management of information as 'one team' within a digital model holding all the information required to design and construct the project from conception to completion.

If you would like to register and download our BIM families please visit our website [www.excelsior-cubicles.co.uk/bim-objects](http://www.excelsior-cubicles.co.uk/bim-objects)



From **creation to installation...**  
you can rest assured

Excelsior have undertaken the manufacture, supply and installation of bespoke washroom products in all washroom environments since 1978. We have a wide selection of safe, attractive and reliable systems to suit all applications, from Nursery Schools right through to Leisure Centres and Hospitals.

**excelsior**<sup>®</sup>  
washrooms for all environments

Excelsior Panelling Systems Ltd  
Unit 2, Woodside Industrial Estate, Pedmore Road, Dudley, West Midlands, DY2 0RL

Tel: +44 (0)1384 267770 Fax: +44 (0)1384 482127  
E-mail: [enquiries@excelsiorps.co.uk](mailto:enquiries@excelsiorps.co.uk) Web: [www.excelsior-cubicles.co.uk](http://www.excelsior-cubicles.co.uk)



Look for FSC Certified products

