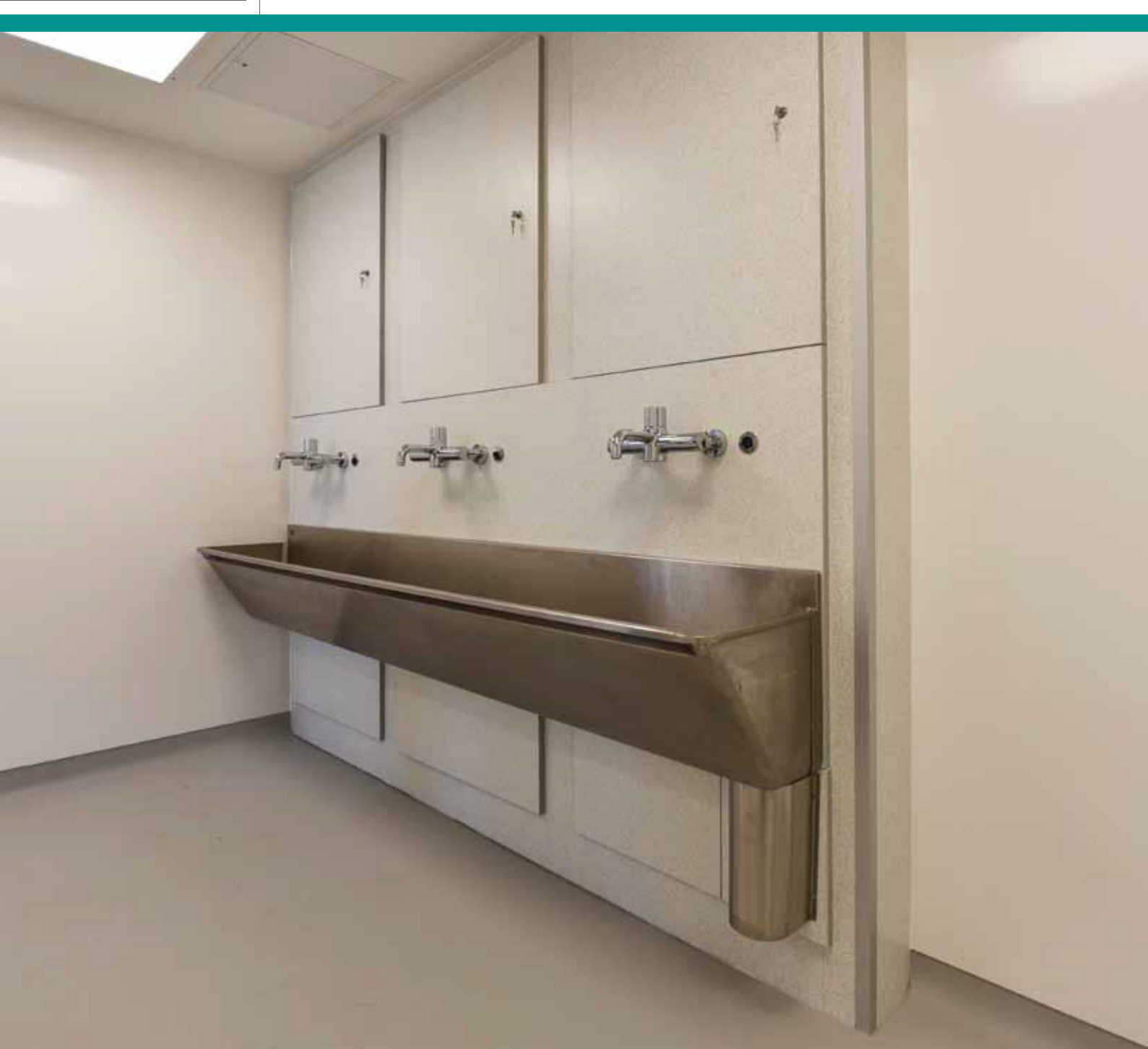


excelsior[®]
washrooms for all environments

Healthcare Panelling System

WASHROOMSFORALLENVIRONMENTS



Healthcare Panelling System

Sector proven Healthcare panelling solution

At Excelsior we offer a number of sector related pre-hung duct panel solutions to meet all your healthcare requirements, including hospitals, clinical surgeries and acute facilities. Furthermore we are able to offer the provision of pre-plumbed sanitary ware if desired.

All our panel sets can be manufactured to suit sanitaryware and location requirements. Panel widths are variable to suit client requirements and are available in either solid grade laminate (SGL) or either square edged or postformed high pressure laminate (HPL).

The panels are set onto a wood frame as standard, however aluminium frames are available upon request with lead times generally 3-4 weeks (from approval of drawings and receipt of all information). All panel sets are also

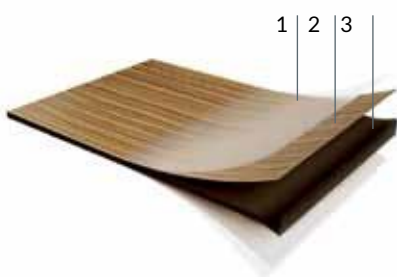
available with hinged and lockable top panels at an additional cost.

Installation by Excelsior is strongly recommended but not essential as a full set of fixing instructions and technical information is provided with the system.



SGL

Compact Solid Grade Laminate



HPL

High Pressure Laminate



Compact Solid Grade Laminate

1. Protective overlay for printed decors.
2. Decorative paper on both sides impregnated with melamine resin.
3. Multiple layers of kraft paper impregnated with phenolic resin, to form a rigid exposed core with a radiused, polished edge.

High Pressure Laminate

1. Protective overlay for printed decors.
2. Decorative paper impregnated with melamine resin.
3. Layers of kraft paper impregnated with phenolic resin, to be bonded onto MR core.

Healthcare Specifications

Mariner 12mm SGL Range Duct Panelling (Wood Frame)

Specifications

Full Height Panel Specification:

- 12mm Compact Solid Grade Laminate
- Black core radius & polished edge finish
- Panels split to suit sanitaryware

Plinth/Shadowgaps:

Dry Areas:

- High Pressure Laminate bonded onto 18mm MR MDF
- Plinth incorporates 1mm ABS edge detail at floor junction to prevent moisture ingress
- All remaining edges as cut
- All external corners fitted with a XL7233 Satin anodised corner extrusion
- Corners & return ends supplied loose for onsite fabrication to allow for transportation

Wet Areas:

- 12mm compact solid grade laminate
- Black core edges as cut
- All remaining edges as cut
- All external corners fitted with a XL7233 Satin anodised corner extrusion
- Corners & return ends supplied loose for onsite fabrication to allow for transportation

Frame Construction/System Support:

- Sole Plate - 25mm WBP plywood (to be packed level)
- Subframe - 18/36mm MR MDF pre-assembled frame
- Aluminium corner extrusions to boxed out units
- Panels pre-hung onto subframe using nylon Ke-Ku clips (hook on or push fit to suit)
- Hinged access panels c/w keyed budget lock available at additional cost

Select 20mm HPL Range Duct Panelling (Wood Frame)

Specifications

Full Height Panel Specification:

- High Pressure Laminate bonded onto 18mm MR MDF
- Panels come with postformed vertical edges and 2mm ABS horizontal edges
- Panels split to suit sanitaryware

Plinth/Shadowgaps:

- High Pressure Laminate bonded onto 18mm MR MDF
- Plinth incorporates 1mm ABS edge detail at floor junction to prevent moisture ingress
- All remaining edges as cut
- All external corners fitted with a YL6764 Satin anodised corner extrusion
- Corners & return ends supplied loose for onsite fabrication to allow for transportation

Frame Construction/System Support:

- Sole Plate - 25mm WBP plywood (to be packed level)
- Subframe - 18/36mm MR MDF pre-assembled frame
- Aluminium corner extrusions to boxed out units
- Panels pre-hung onto subframe using nylon Ke-Ku clips (hook on or push fit to suit)
- Hinged access panels c/w keyed budget lock available at additional cost

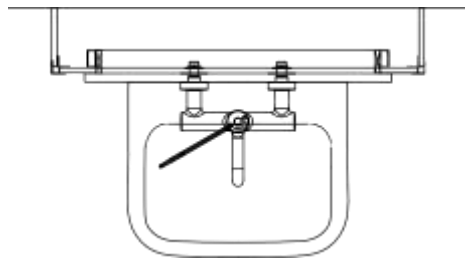
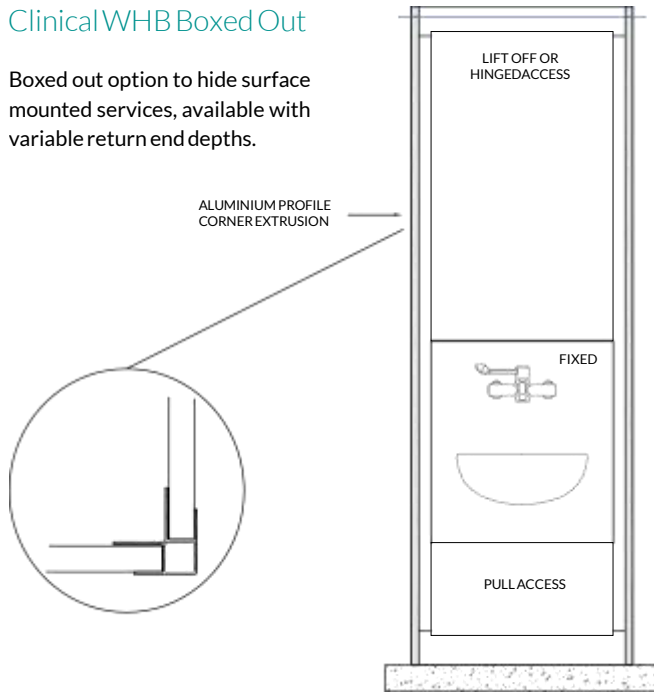
Special Notes:

- Excelsior ALUMINIUM FRAME SYSTEM recommended for wet area useage.
- Excelsior standard support systems may not be compatible with all sanitary flushing systems, therefore please enquire prior to placing order to ensure adaptations can be incorporated.
- Hinged access panels c/w keyed budget lock available at additional cost

Healthcare - Typical Layout

Clinical WHB Boxed Out

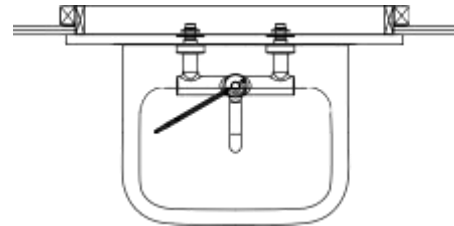
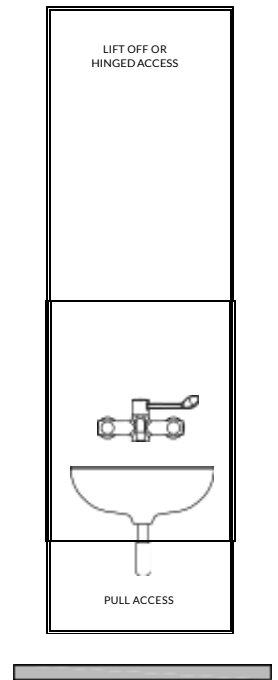
Boxed out option to hide surface mounted services, available with variable return end depths.



Plan Layout

Clinical WHB Recessed

Recessed option set into aperture in wall structure. Panels mounted onto subframe.



Plan Layout

excelsior[®]
washrooms for all environments

Excelsior Panelling Systems Ltd
Unit 2, Woodside Industrial Estate, Pedmore Road, Dudley, West Midlands, DY2 0RL

Tel: +44 (0)1384 267770 Fax: +44 (0)1384 482127
E-mail: enquiries@excelsiorps.co.uk Web: www.excelsior-cubicles.co.uk

