

**excelsior**<sup>®</sup>  
washrooms for all environments

## Mariner Cubicle Range

WASHROOMS FOR ALL ENVIRONMENTS





# Mariner Cubicle Range

## Hard wearing resistant & durable cubicle system.

The Mariner Range is ideal for harsh environments utilising vandal & water resistant Compact Solid Grade Laminate. Multiple hardware options offer greater design flexibility. The Mariner range offers an extended life cycle under normal usage conditions.

A heavy duty vandal and water resistant system utilising compact solid grade laminate suited to applications where the panelling is at risk from harsh environmental factors or abuse by users.

Vandal resistant fittings are provided in aluminium as standard or stainless steel to compliment the smooth radius black core edges.

This range is suitable for use in humid areas (i.e. Showers, swimming baths or leisure centres) and harsh environments such as industrial and public areas vulnerable to vandalism.

Bespoke powder coated hardware finishes available at an additional cost.

Wall & duct panelling and fully framed vanity units can be supplied to complement this system.

The Mariner range is available on a typical delivery period of 3-4 weeks from receipt of approved drawings and confirmation of all colour finishes.

Installation by Excelsior is strongly recommended but not essential as a full set of fixing instructions and technical information is provided with the system.



### Ironmongery

1. Indicator Faceplate
2. Indicator Slide Bolt
3. Aluminium Leg
4. Aluminium Hinge



1.



2.



3.



4.

### Ironmongery

1. Indicator Faceplate
2. Indicator Thumb Turn
3. Stainless Steel Leg
4. Stainless Steel Hinge



1.



2.



3.



4.



# Mariner Specifications

## Mariner Cubicles (Aluminium Ironmongery)

### Specifications

#### Doors, Divisions & Pilasters Panel Specification:

- 12mm Compact Solid Grade Laminate
- Black core radius & polished edge finish

#### Standard Dimensions:

**Standard:** 1960mm overall height (c/w 150mm leg)  
x 1500mm deep

#### Aluminium Ironmongery:

- Rise and fall hinges - Ref: EXH-A13
- Recessed Indicator and Keep - Ref: EXL-A13
- Leg 150mm - Ref: EXL-A150
- Coat Hook - Ref: EXCH-A13
- Wall Fixings: 13mm SAA Division U-Channel  
13mm Wall Pilaster J-Channel
- Headrail - Ref: EXPHR13
- Headrail End Caps - Ref: EXHREND

*Toilet Roll Holders & Accessories  
available upon request.*

## Mariner Cubicles (Stainless Steel Ironmongery)

### Specifications

#### Doors, Divisions & Pilasters Panel Specification:

- 12mm Compact Solid Grade Laminate
- Black core radius & polished edge finish

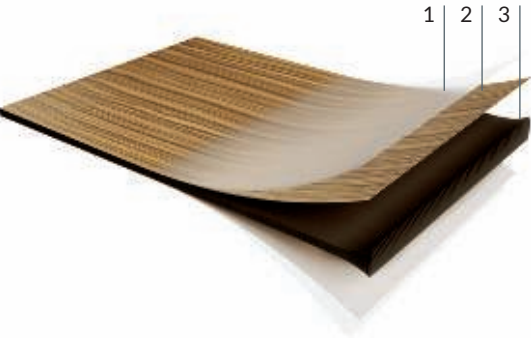
#### Standard Dimensions:

**Standard:** 1960mm overall height (c/w 150mm leg)  
x 1500mm deep

#### Stainless Steel Ironmongery:

- Rise & fall hinges - Ref: T100 L or T100 R (to suit handing)
- Indicator and Keep - Ref: T201L or T201R / keep T250/buffer T950
- Leg 150mm - Ref: T300
- Coat Hook - Ref: T520
- Wall Fixings - Ref: T410
- Headrail - Ref: EXPHR13
- Headrail End Caps - Ref: EXHREND

*Toilet Roll Holders & Accessories  
available upon request.*



1. Protective overlay for printed decors.
2. Decorative paper on both sides impregnated with melamine resin.
3. Multiple layers of kraft paper impregnated with phenolic resin, to form a rigid exposed core with a radiused, polished edge.

## SGL - Compact Solid Grade Laminate

Solid Grade Laminate is extremely resistant to water penetration and impact damage. Nominally 12mm in sheet thickness with radiused and polished solid black edges. Ideal for use in the harshest of environments such as schools and leisure centres.

- Self-supporting Solid Grade Laminate.
- High impact and moisture resistant.
- Machinable throughout its entire thickness. (Black Core)
- Decorative both sides.

**Ironmongery Finish:** Excelsior Semi Bright Anodised Aluminium as standard. (Stainless Steel available on request).

**Colour Selections:** Excelsior preferred cubicle & washroom colour selection.

**Available as standard at 1960mm high. 2100mm available at additional cost.**

**Special Notes:** Outward opening doors complete with back to back Aluminium 'D' Handles and full length 'Z' Section door Stop/Keep

**We recommend that outward opening doors open onto an adjacent solid wall to prevent overstrain on hinges.**



# BIM Objects - Typical Layout

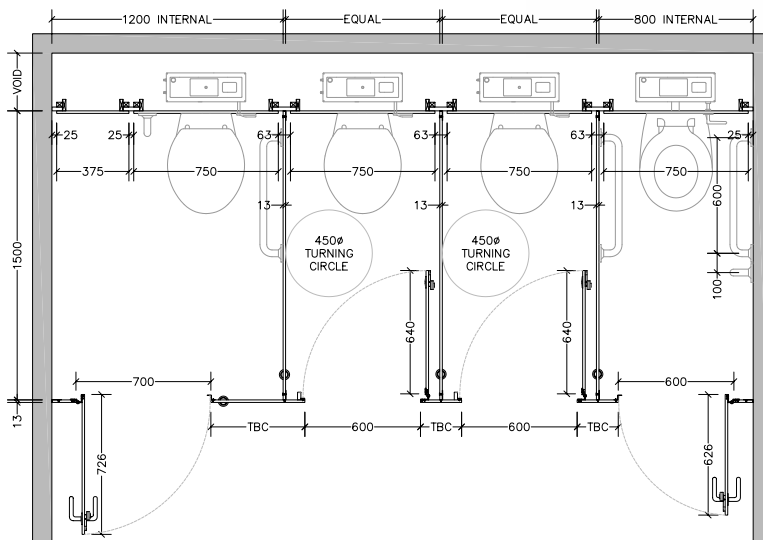
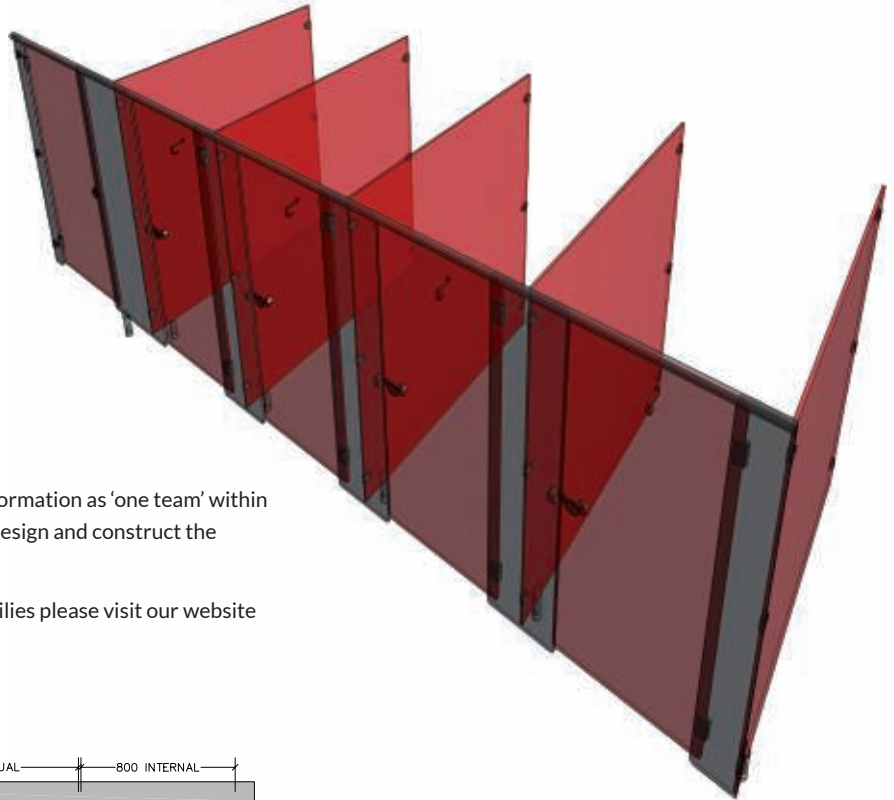
## Downloadable BIM Objects

Our BIM Families are a time saving development with fully functional parametric objects. This highly acclaimed 3D model-based process is specifically designed for Infrastructure and Building projects. It offers many benefits to owners that enable simplicity for project management.

- Visualisation of designs
- Simulation of multiple design ideas
- Productivity improvement
- Analysing and testing of application and performance

BIM enables collaborative working; management of information as 'one team' within a digital model holding all the information required to design and construct the project from conception to completion.

If you would like to register and download our BIM families please visit our website [www.excelsior-cubicles.co.uk/bim-objects](http://www.excelsior-cubicles.co.uk/bim-objects)



From **creation** to **installation**...  
you can rest assured

Excelsior have undertaken the manufacture, supply and installation of bespoke washroom products in all washroom environments since 1978. We have a wide selection of safe, attractive and reliable systems to suit all applications, from Nursery Schools right through to Leisure Centres and Hospitals.

**excelsior**<sup>®</sup>  
washrooms for all environments

Excelsior Panelling Systems Ltd  
Unit 2, Woodside Industrial Estate, Pedmore Road, Dudley, West Midlands, DY2 0RL

Tel: +44 (0)1384 267770 Fax: +44 (0)1384 482127  
E-mail: [enquiries@excelsiorps.co.uk](mailto:enquiries@excelsiorps.co.uk) Web: [www.excelsior-cubicles.co.uk](http://www.excelsior-cubicles.co.uk)

