

**excelsior**<sup>®</sup>  
washrooms for all environments

## Option Cubicle Range

WASHROOMS FOR ALL ENVIRONMENTS



# Option Cubicle Range

## The clean, economic & versatile cubicle system

The Option range is Excelsior's most cost effective and long standing cubicle system, utilising 19mm Melamine Faced Chipboard and offering a price economy to suit all budgets yet still maintaining a strong visual presence.

Option Plus Range allows us to offer a 20mm postformed HPL Pilaster frontage with 19mm Melamine faced chipboard doors and partitions.

Option Range allows for a MFC square 2mm PVC edged pilaster frontage with 19mm Melamine faced chipboard doors and partitions.

Suitable for light to medium use environments and available in a range of plain, pattern and woodgrain melamine faced chipboard colour finishes offered by Sonae.

Each panel element is edged with matching high impact 2mm softform ABS to enhance aesthetic appearance, with the Option Plus range offering an upgrade to HPL postformed pilasters.

Cubicle fixings and accessories are provided in a durable semi bright anodised aluminium.

Wall & duct panelling and fully framed vanity units can be supplied to complement this system.

Option range suitable for dry areas only.

The Option range is available on a short term delivery basis, typically 2-3 weeks from receipt of approved drawings.

Installation by Excelsior is strongly recommended but not essential as a full set of fixing instructions and technical information is provided with the system.



### Ironmongery

1. Indicator Faceplate
2. Indicator Slide Bolt
3. Aluminium Leg
4. Aluminium Hinge



1.



2.



3.



4.

# Option Specifications

## Option Cubicles

### Specifications

#### Doors, Divisions & Pilasters Panel Specification:

- 19mm Melamine Faced Chipboard
- Matching or contrasting 2mm ABS edge finish

#### Standard Dimensions:

- 2050mm overall height (including 150mm ground clearance) x 1500mm deep

#### Ironmongery:

- Rise and fall aluminium hinges - Ref: EXH-A20
- Recessed Indicator and Keep - Ref: EXL-A20
- Leg 150mm - Ref: EXL-A150
- Coat Hook - Ref: EXCH-A20
- Brackets -
  - 20mm SAA Division U-Channel
  - 20mm SAA Wall Pilaster J-Channel
- Headrail - Ref: EXPHR20
- Headrail End Caps - Ref: EXHREND

**Toilet Roll Holders & Accessories**  
*available upon request.*

## Option Plus Cubicles

### Specifications

#### Doors & Divisions Panel Specification:

- 19mm Melamine Faced Chipboard
- Matching or contrasting 2mm ABS edge finish

#### Pilaster Panel Specification:

- High Pressure Laminate PUR bonded onto 18mm MR Core
- Post formed vertical edges
- Horizontal 2mm ABS edges

#### Standard Dimensions:

- 2050mm overall height (including 150mm ground clearance) x 1500mm deep

#### Ironmongery:

- Rise and fall aluminium hinges - Ref: EXH-A20
- Recessed Indicator and Keep - Ref: EXL-A20
- Leg 150mm - Ref: EXL-A150
- Coat Hook - Ref: EXCH-A20
- Brackets -
  - 20mm SAA Division U-Channel
  - 20mm SAA Wall Pilaster J-Channel
- Headrail - Ref: EXPHR20
- Headrail End Caps - Ref: EXHREND

**Toilet Roll Holders & Accessories**  
*available upon request.*



1. Decorative paper on both sides impregnated with melamine resin.
2. Chipboard core.

## MFC - Melamine Faced Laminate

Melamine faced chipboard is ideally for use in dry environments with a low risk of vandalism. Melamine coated decorative paper is laid directly onto 19mm high density chipboard with panel edges finished in 2mm PVC. Generally a budget driven option.

**Ironmongery Finish:** Excelsior Semi Bright Anodised Aluminium as standard.

**Colour Selections:** Excelsior Sonae MFC cubicle & washroom colour selection.

**Special Notes:** Outward opening doors complete with back to back aluminium 'D' Handles and full length 'Z' Section door Stop/Keep.

We recommend that outward opening doors open onto an adjacent solid wall to prevent overstrain on hinges.

# BIM Objects - Typical Layout

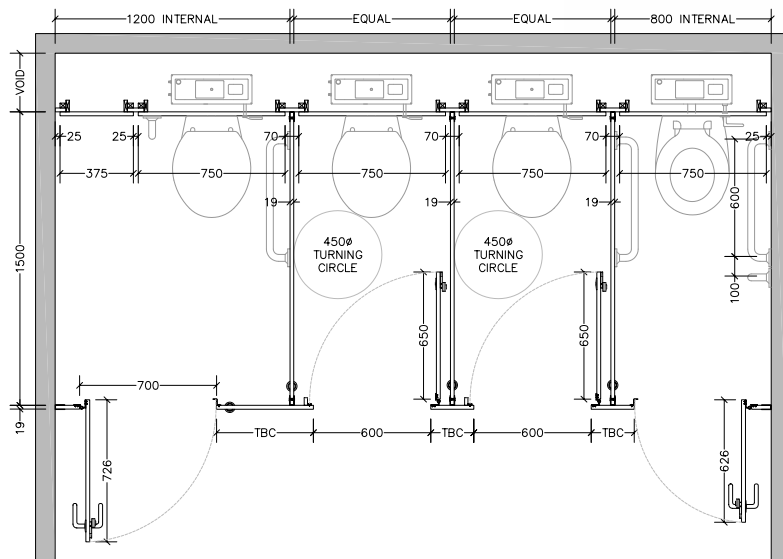
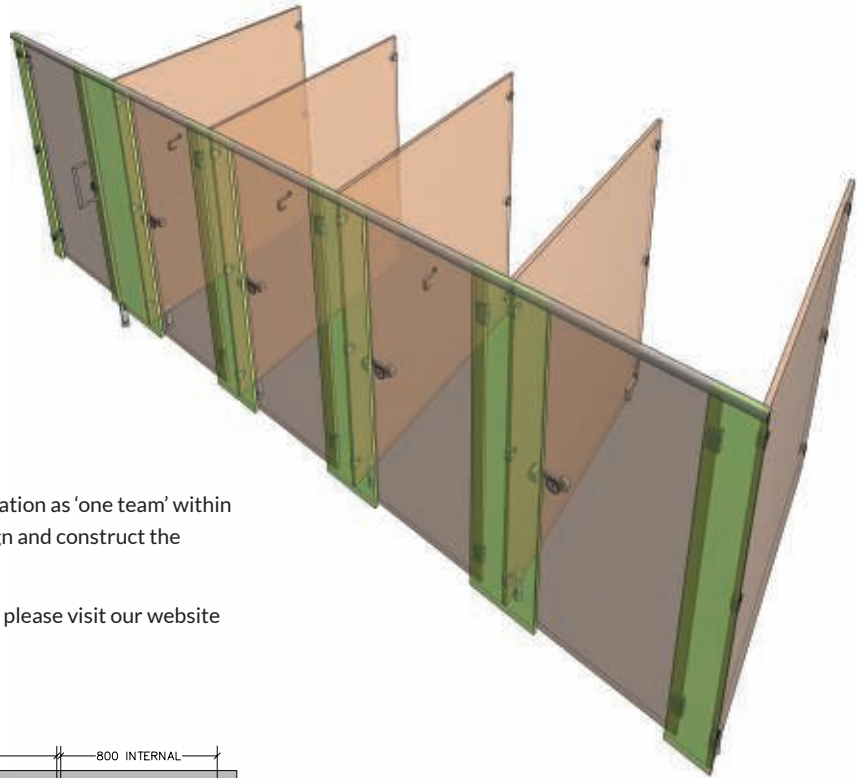
## Downloadable BIM Objects

Our BIM Families are a time saving development with fully functional parametric objects. This highly acclaimed 3D model-based process is specifically designed for Infrastructure and Building projects. It offers many benefits to owners that enable simplicity for project management.

- Visualisation of designs
- Simulation of multiple design ideas
- Productivity improvement
- Analysing and testing of application and performance

BIM enables collaborative working; management of information as 'one team' within a digital model holding all the information required to design and construct the project from conception to completion.

If you would like to register and download our BIM families please visit our website [www.excelsior-cubicles.co.uk/bim-objects](http://www.excelsior-cubicles.co.uk/bim-objects)



## From creation to installation... you can rest assured

Excelsior have undertaken the manufacture, supply and installation of bespoke washroom products in all washroom environments since 1978. We have a wide selection of safe, attractive and reliable systems to suit all applications, from Nursery Schools right through to Leisure Centres and Hospitals.

**excelsior**<sup>®</sup>  
washrooms for all environments

**Excelsior Panelling Systems Ltd**  
Unit 2, Woodside Industrial Estate, Pedmore Road, Dudley, West Midlands, DY2 0RL

**Tel:** +44 (0)1384 267770 **Fax:** +44 (0)1384 482127  
**E-mail:** [enquiries@excelsiorps.co.uk](mailto:enquiries@excelsiorps.co.uk) **Web:** [www.excelsior-cubicles.co.uk](http://www.excelsior-cubicles.co.uk)

