

**excelsior**<sup>®</sup>  
washrooms for all environments

## **Planar** Cubicle Range

WASHROOMS FOR ALL ENVIRONMENTS



# Planar Cubicle Range

## Offering style and strength in harmony

The Planar range of cubicles allows us to offer a sophisticated, premium and sleek rebated flush fronted facade in either 20mm or 12mm compact grade laminate. Attractive semi bright anodised aluminium ironmongery completes a system that is equally at home in a prestigious office development or a new school academy.

Suitable for both shower and WC cubicle environments.

With doors and pilasters available in either 20mm or 12mm thickness as standard and divisions in 12mm thickness the planar cubicle ranges offer both durability and style in abundance.

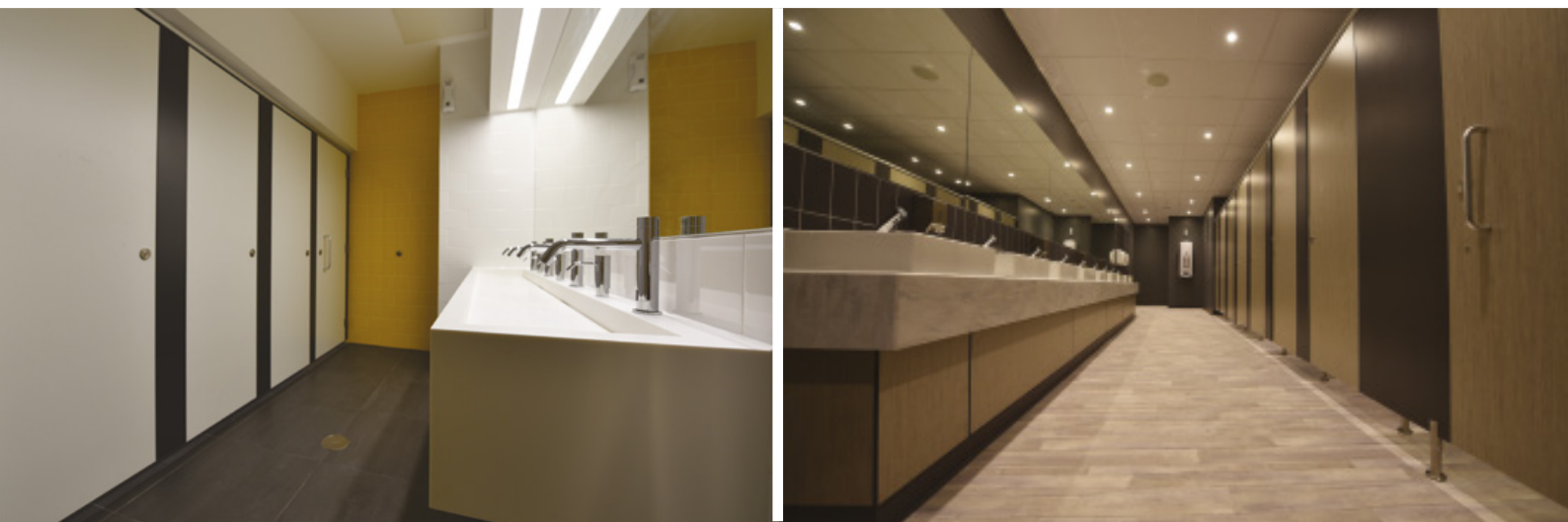
This range is suitable for use in humid areas, such as showers, swimming baths, leisure centers etc.

Wall & duct panelling and fully framed vanity units can be supplied to complement this system.

The Planar range is available on a typical delivery period of 3-4 weeks from receipt of approved drawings.

The option of digital laminate designs are available subject to additional cost and lead times.

Installation by Excelsior is strongly recommended but not essential as a full set of fixing instructions and technical information is provided with the system.



### Aluminum Ironmongery

1. Indicator Faceplate
2. Indicator Slide Bolt
3. Aluminium Leg
4. Aluminium Hinge



1.



2.



3.



4.

# Planar Specifications

## Planar 20 Cubicles

### Specifications

#### Doors and Pilasters:

- 20mm Laminate Faced Compact Density Fibreboard( CDF)
- Rebated Machined Black Core Edges

#### Divisions:

- 12mm Compact Grade Laminate
- Square Machined Black Core Edges

#### Standard Dimensions:

- 1960mm overall height (c/w 150mm leg) x 1500mm deep upto 2700mm high available upon request

#### All Heights Subject to Material/Colour Selection

#### Ironmongery:

- Self Closing Hinges - Ref: EXH-AF30L/R
- Indicator and Keep - Ref: EXL-A20, Ref: EXK-AF30 (Keep)
- Coat Hook - Ref: EXCH-A20
- Continuous Wall Channel - Ref: ALSP3978
- Continuous Division Channel - Ref: ALSP3980
- Leg - Ref: EXL-A150 or U Channel (to floor on upto 2700mm height option)
- Headrail - Ref EXPHR20
- Headrail End Caps - Ref EXHREND

**Toilet Roll Holders & Accessories**  
*available upon request.*

## Planar 12 Cubicles

### Specifications

#### Doors and Pilasters:

- 12mm Compact Grade Laminate
- Rebated Machined Black Core Edges

#### Divisions:

- 12mm Compact Grade Laminate
- Square Machined Black Core Edges

#### Standard Dimensions:

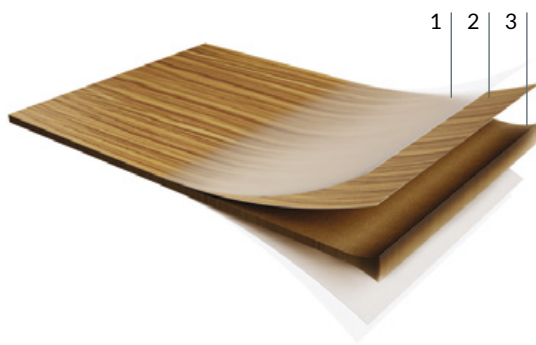
- 1960mm overall height (c/w 150mm leg) x 1500mm deep upto 2700mm high available upon request

#### All Heights Subject to Material/Colour Selection

#### Ironmongery:

- Self Closing Hinges - Ref: EXH-AF30L/R
- Indicator and Keep - Ref: EXL-A13, Ref: EXK-AF30 (Keep)
- Coat Hook - Ref: EXCH-A13
- Continuous Wall Channel - Ref: ALSP3980
- Continuous Division Channel - Ref: ALSP3980
- Leg - Ref: EXL-A150 or U Channel (to floor on upto 2700mm height option)
- Headrail - Ref EXPHR13
- Headrail End Caps - Ref EXHREND

**Toilet Roll Holders & Accessories**  
*available upon request.*



1. Protective overlay for printed decors.
2. Decorative paper on both sides impregnated with melamine resin.
3. Multiple layers of kraft paper impregnated with phenolic resin, to form a rigid exposed core with a radiused, polished edge.

## SGL - Compact Solid Grade Laminate

Solid Grade Laminate is extremely resistant to water penetration and impact damage. Nominally 12mm in sheet thickness with radiused and polished solid black edges. Ideal for use in the harshest of environments such as schools and leisure centres.

- Self-supporting Solid Grade Laminate.
- High impact and moisture resistant.
- Machinable throughout its entire thickness. (Black Core)
- Decorative both sides.

**Ironmongery Finish:** Excelsior Semi Bright Anodised Aluminium as standard. (Stainless Steel available on request).

**Colour Selections:** Excelsior preferred cubicle & washroom colour selection.

**Special Notes:** Outward opening doors complete with back to back Aluminium 'D' Handles.

**Customer to ensure perimeter walls are plumb level at pilaster and partition junctions.**

**We recommend that outward opening doors open onto an adjacent solid wall to prevent overstrain on hinges.**

# BIM Objects - Typical Layout

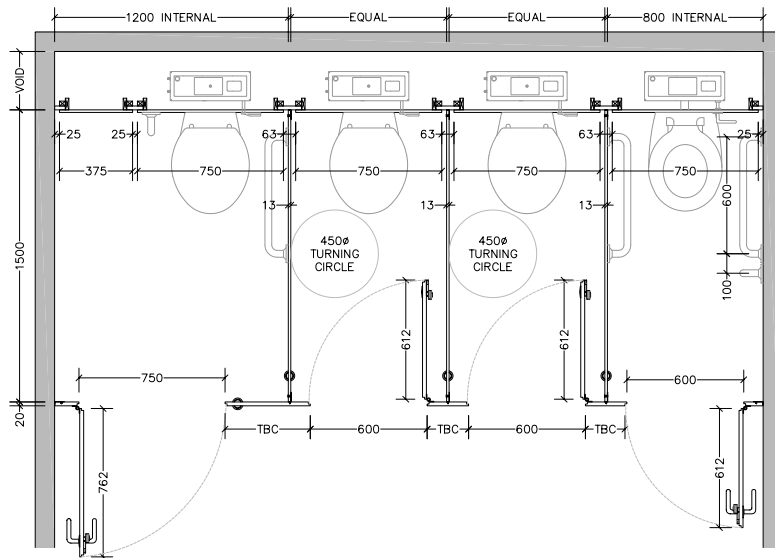
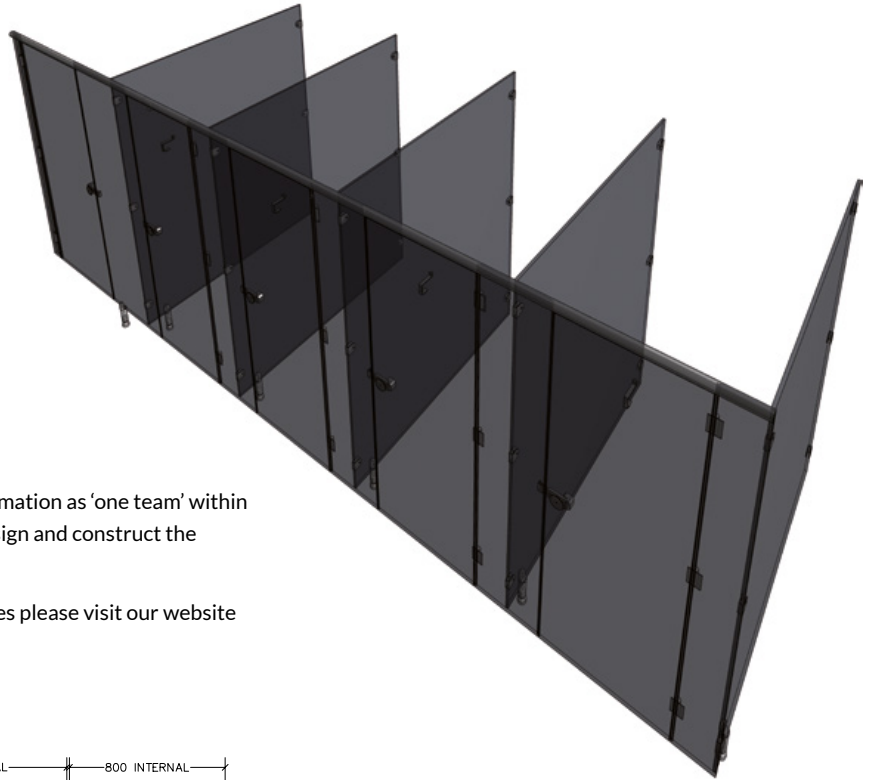
## Downloadable BIM Objects

Our BIM Families are a time saving development with fully functional parametric objects. This highly acclaimed 3D model-based process is specifically designed for Infrastructure and Building projects. It offers many benefits to owners that enable simplicity for project management.

- Visualisation of designs
- Simulation of multiple design ideas
- Productivity improvement
- Analysing and testing of application and performance

BIM enables collaborative working; management of information as 'one team' within a digital model holding all the information required to design and construct the project from conception to completion.

If you would like to register and download our BIM families please visit our website [www.excelsior-cubicles.co.uk/bim-objects](http://www.excelsior-cubicles.co.uk/bim-objects)



## From creation to installation... you can rest assured

Excelsior have undertaken the manufacture, supply and installation of bespoke washroom products in all washroom environments since 1978. We have a wide selection of safe, attractive and reliable systems to suit all applications, from Nursery Schools right through to Leisure Centres and Hospitals.

**excelsior**<sup>®</sup>  
washrooms for all environments

**Excelsior Panelling Systems Ltd**  
Unit 2, Woodside Industrial Estate, Pedmore Road, Dudley, West Midlands, DY2 0RL

**Tel:** +44 (0)1384 267770 **Fax:** +44 (0)1384 482127  
**E-mail:** [enquiries@excelsiorps.co.uk](mailto:enquiries@excelsiorps.co.uk) **Web:** [www.excelsior-cubicles.co.uk](http://www.excelsior-cubicles.co.uk)

