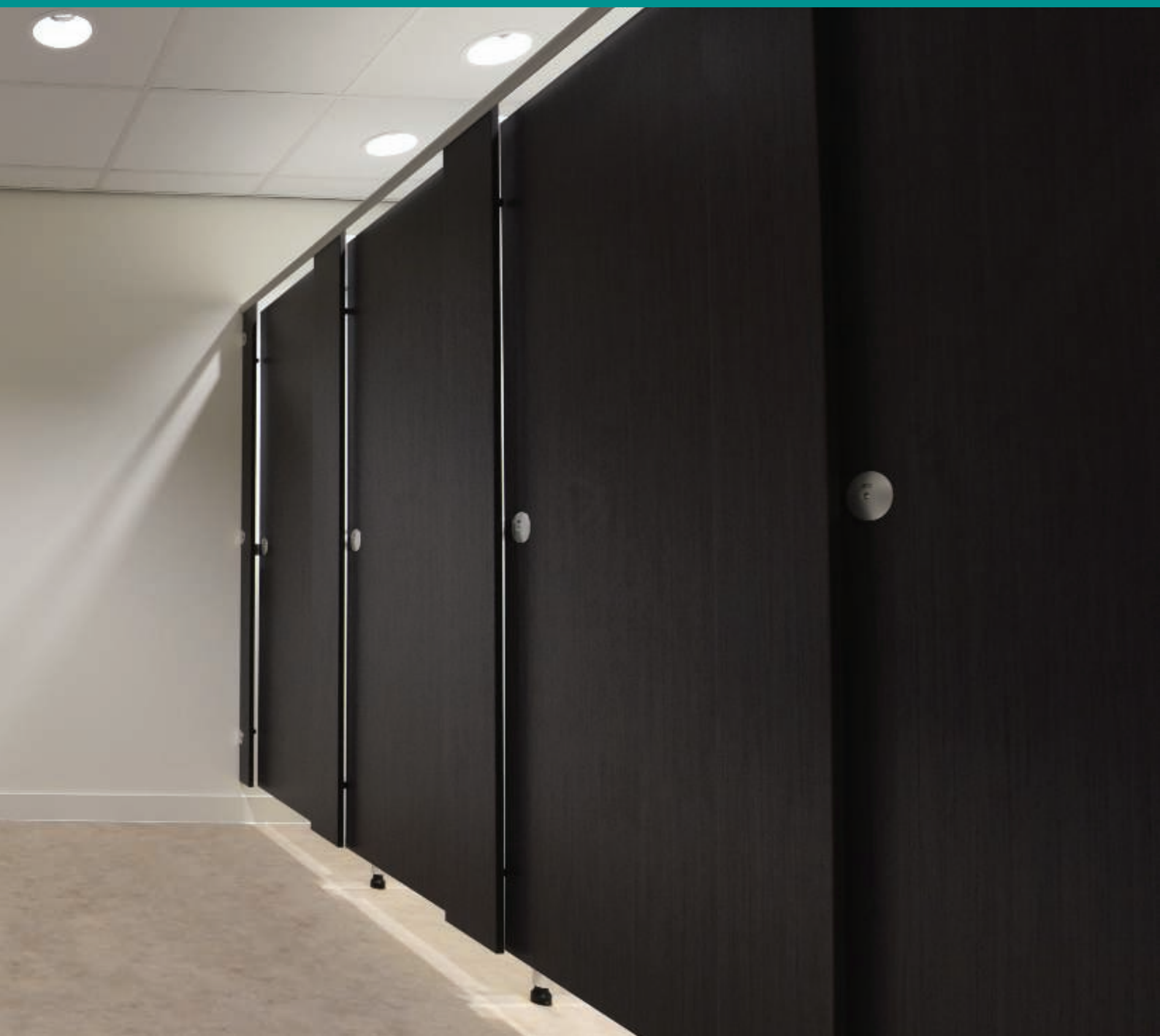


**excelsior**<sup>®</sup>  
washrooms for all environments

## **Select** Cubicle Range

WASHROOMS FOR ALL ENVIRONMENTS



# Select Cubicle Range

## An efficient, practical & robust cubicle system

The Select Range is a tried and tested cubicle system comprising of High Pressure Laminate faced components, incorporating Excelsior's own Aluminium range of Ironmongery as standard. The range offers 2 pilaster options which include a 20mm square edged version and a 30mm postformed version.

Suitable for applications where superb appearance and medium use durability is required. Commercial office and educational environments can be greatly enhanced by the use of this attractive range.

Each panel element is edged with matching high impact 2mm ABS to enhance aesthetic appearance.

Cubicle ironmongery is provided in an aluminium finish as standard. Bespoke powder coated hardware can be supplied at an additional cost.

This range is not suitable for use in areas of high humidity (e.g. Showers).

Wall & duct panelling and fully framed vanity units can be supplied to complement this system.

The Select range is available on a short term delivery basis, typically 3-4 weeks from receipt of approved drawings.

Installation by Excelsior is strongly recommended but not essential as a full set of fixing instructions and technical information is provided with the system.



### Ironmongery

1. Indicator Faceplate
2. Indicator Slide Bolt
3. Aluminium Leg
4. Aluminium Hinge



# Select Specifications

## Select Cubicle Range

### Specifications

#### Doors, Divisions & Pilasters:

- High Pressure Laminate PUR bonded onto 18mm MR core
- 2mm ABS edge finish

#### Standard Dimensions:

- 1960mm overall height  
(including 150mm ground clearance) x 1500mm deep

#### Ironmongery:

- Rise and fall aluminium hinges - Ref: EXH-A20
- Recessed Indicator and Keep - Ref: EXL-A20
- Leg 150mm - Ref: EXL-A150
- Coat Hook - Ref: EXCH-A20
- Brackets -  
20mm SAA Division U-Channel  
20mm SAA Wall Pilaster J-Channel
- Headrail - Ref: EXPHR20
- Headrail End Caps - Ref: EXHREND

**Toilet Roll Holders & Accessories**  
*available upon request.*

## Select Plus Cubicle Range

### Specifications

#### Doors & Divisions:

- High Pressure Laminate PUR bonded onto 18mm MR core
- 2mm ABS edge finish

#### Pilasters:

- High Pressure Laminate bonded onto 28mm MR core
- Postformed Vertical Edges

#### Standard Dimensions:

- 1960mm overall height  
(including 150mm ground clearance) x 1500mm deep

#### Ironmongery:

- Rise and fall aluminium hinges - Ref: EXH-A20
- Recessed Indicator and Keep - Ref: EXL-A20
- Leg 150mm - Ref: EXL-A150
- Coat Hook - Ref: EXCH-A20
- Brackets -  
20mm SAA Division U-Channel  
20mm SAA Wall Pilaster J-Channel
- Headrail - Ref: EXPHR20
- Headrail End Caps - Ref: EXHREND

**Toilet Roll Holders & Accessories**  
*available upon request.*



1. Protective overlay for printed decors.
2. Decorative paper impregnated with melamine resin.
3. Layers of kraft paper impregnated with phenolic resin, to be bonded onto MR core.

## HPL - High Pressure Laminate

High pressure laminate (bonded onto a chipboard or MDF substrate. These core materials offer water resistance only (they are not waterproof) offers heat, scratch and impact resistance with edges finished with a colour match or contrast 2mm PVC detail.

Comfortable in school, office, entertainment, health and retail environments alike.

**Ironmongery Finish:** Excelsior Semi Bright Anodised Aluminium as standard.

**Colour Selections:** Excelsior preferred cubicle & washroom colour selection.

All Heights Subject to Material/Colour Selection. Images are a non standard gloss finish, available at additional cost

**Special Notes:** Outward opening doors complete with back to back Aluminium 'D' Handles and full length 'Z' Section door Stop/Keep. 2100mm cubicle height available at additional cost.

We recommend that outward opening doors open onto an adjacent solid wall to prevent overstrain on hinges.

# BIM Objects - Typical Layout

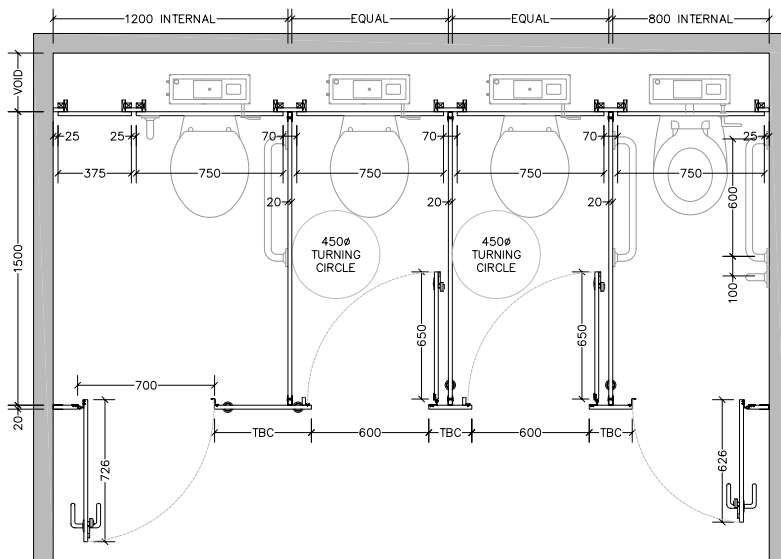
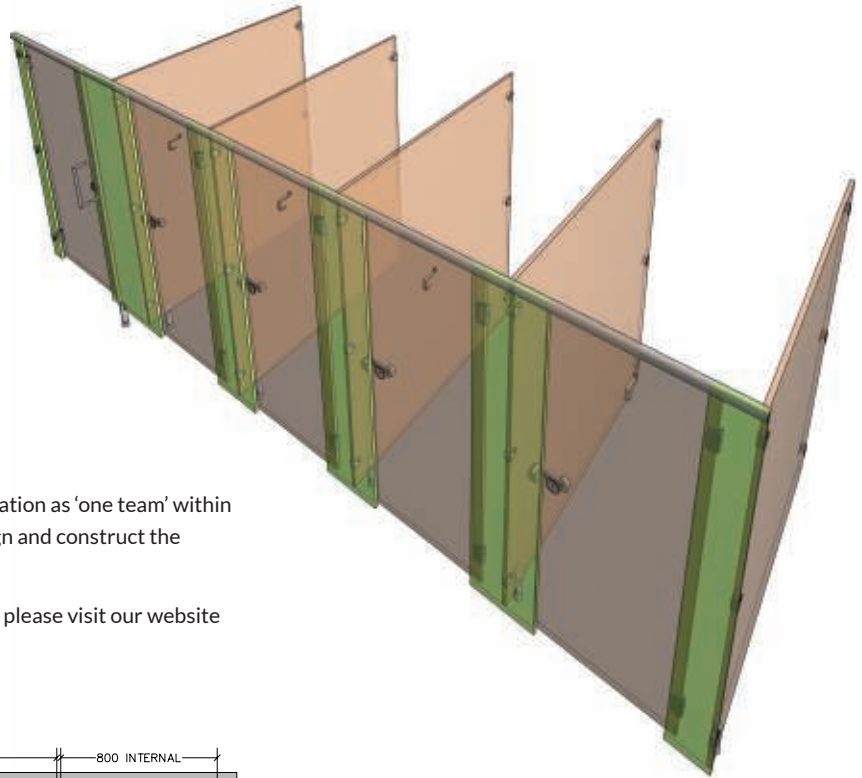
## Downloadable BIM Objects

Our BIM Families are a time saving development with fully functional parametric objects. This highly acclaimed 3D model-based process is specifically designed for Infrastructure and Building projects. It offers many benefits to owners that enable simplicity for project management.

- Visualisation of designs
- Simulation of multiple design ideas
- Productivity improvement
- Analysing and testing of application and performance

BIM enables collaborative working; management of information as 'one team' within a digital model holding all the information required to design and construct the project from conception to completion.

If you would like to register and download our BIM families please visit our website [www.excelsior-cubicles.co.uk/bim-objects](http://www.excelsior-cubicles.co.uk/bim-objects)



From creation to installation...  
you can rest assured

Excelsior have undertaken the manufacture, supply and installation of bespoke washroom products in all washroom environments since 1978. We have a wide selection of safe, attractive and reliable systems to suit all applications, from Nursery Schools right through to Leisure Centres and Hospitals.

**excelsior**<sup>®</sup>  
washrooms for all environments

Excelsior Panelling Systems Ltd  
Unit 2, Woodside Industrial Estate, Pedmore Road, Dudley, West Midlands, DY2 0RL

Tel: +44 (0)1384 267770 Fax: +44 (0)1384 482127  
E-mail: [enquiries@excelsiorps.co.uk](mailto:enquiries@excelsiorps.co.uk) Web: [www.excelsior-cubicles.co.uk](http://www.excelsior-cubicles.co.uk)

