



The Project – Joseph Leckie Academy

Joseph Leckie Academy £3.5 million modern new wing received Walsall Council's planning committee approval in April 2015, and it has been full steam ahead since then.

Speller Metcalfe awarded contractor and commenced building the state of the art 21 classroom block in May 2015.

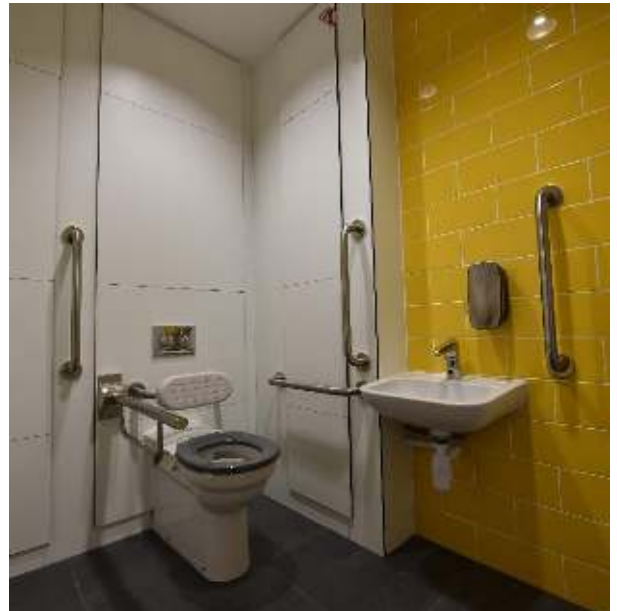
The Challenge

The Architects vision was to create a minimalist washroom décor with flush frontage cubicles and high specification wash stations.

The overall finish to be non-fussy and unobtrusive.

Cubicles sited below a bulkhead were required to appear to float and all legs and fixing to be hidden.

Standard vanity frontages and sinks did not meet the brief, a bespoke wash station was required.



The Solution

Excelsior Planar 12mm Solid Grade Laminate has proven an excellent choice for the building, the flush frontage provides a seamless finish, and the durability of solid grade laminate panels is perfect for a heavy use environment such as a school. Finished with a 'P' section headrail for maximum stability, eradicating any lateral movement provided the rigidity the system needs.

The overall aesthetics of the installation is extremely pleasing, the cubicles overall height @ 2100mm on a 50mm leg is a standard height system however having a bulkhead in place has increased the sense of privacy and delivered the opulence of a floor to ceiling enclosure. The 50mm leg is set back inside the cubicle, fixed onto the partition which enhances the seamless finish from the exterior and infers the system is floating.

