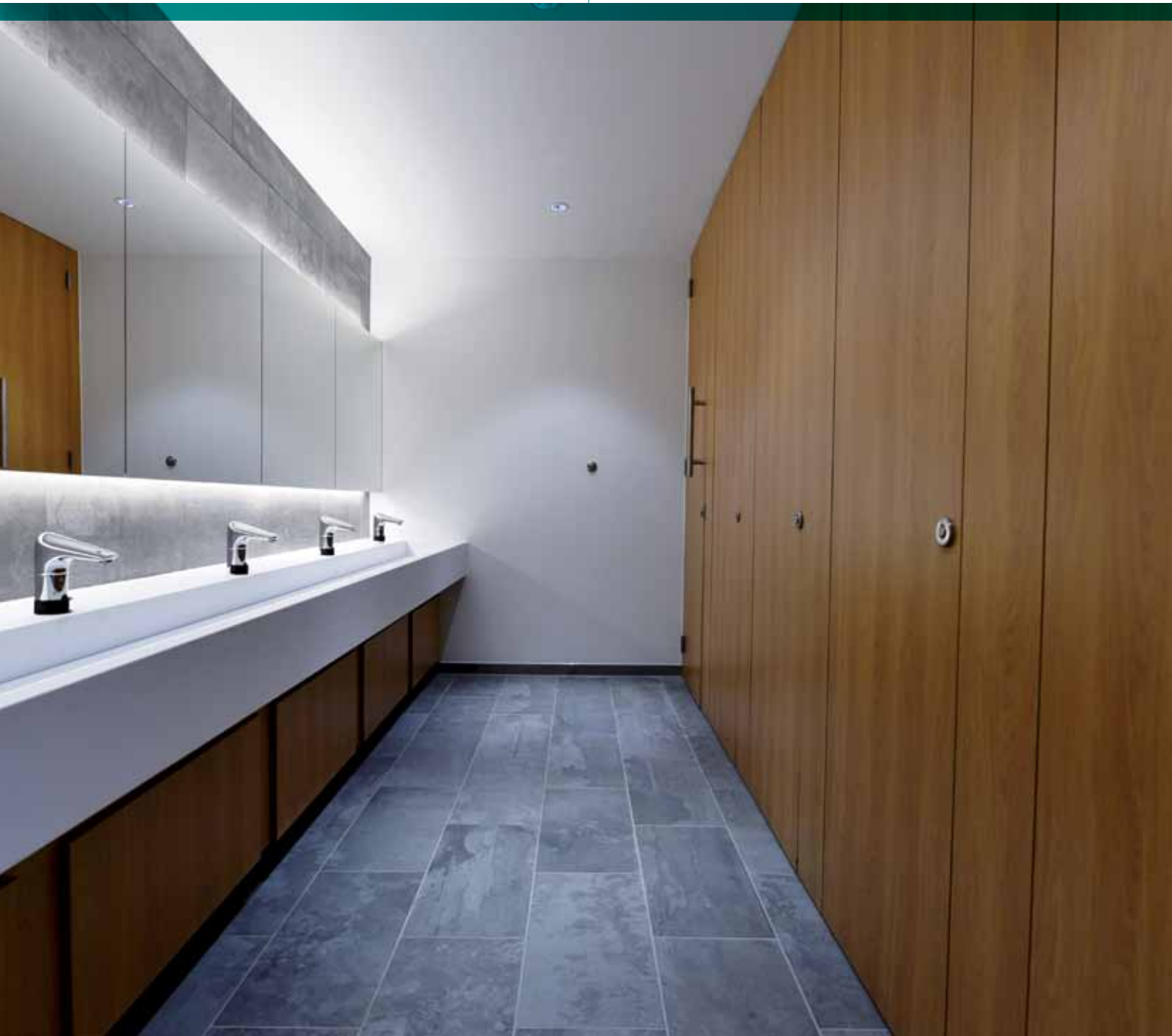


excelsior[®]
washrooms for all environments

Product Catalogue





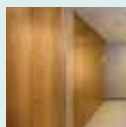


Bespoke washroom products for all washroom environments.

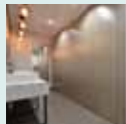
At Excelsior, we have undertaken the manufacture, supply and installation of bespoke washroom products in all washroom environments since 1978. We have an extensive selection of WC and changing cubicles, duct panelling and vanity unit systems to suit all environments; from schools to office developments and leisure centres to hospitals we have a solution to your requirements.

All levels of durability are catered for to meet our client's specification requirements and commercial constraints, always combining innovation with practicality. With a combined factory and office space of some 30,000 sq. ft, and the latest in production machinery we are continually striving to meet and exceed all of our client's expectations.

Dedicated and professional teams of Sales Estimators, CAD Operatives and Contracts Staff are readily available to provide technical assistance and guidance through our product ranges relative to individual project needs. Furthermore, we offer an installation service where we survey and manage the on-site process. Our experienced site fitting teams are fully trained and equipped with trade specific CSCS cards to ensure that our products are installed to the quality standards to meet our client's expectations.



Flush 44 Cubicle Range 6



Flush 30 Cubicle Range 8



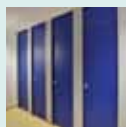
Planar Cubicle Range 10



T-Line Cubicle Range 12



Senator Cubicle Range 14



Skyline Cubicle Range 16



Optik Cubicle Range 18



Mariner Cubicle Range 20



Select Cubicle Range 22



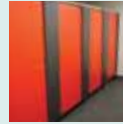
Shower & Wet Room Range 24



Harlequin Cubicle Range 26



Alaglide® Cubicle Range 28



Summit Cubicle Range 30



Hydroline Cubicle Range 32



Option Cubicle Range 34



Healthcare Panelling Range 36



Duct Panelling Range 38



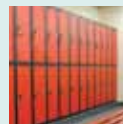
Vanity Unit Range 40



Magma Trough Range 42



Bench Seating Range 44



Excelsior Locker Range 46



Washroom Accessories 48

Flush 44 Cubicle Range

The premium flush fronted cubicle solution

The Flush 44 cubicle range is the genuine 'premium quality' system, offering a sleek flush fronted facade, with surface finishes available in both HPL and Natural Veneer complete with hardwood edges to doors. Allowing the the most discerning specifier complete satisfaction in their selection.

At Excelsior we offer the Flush44 in three standard formats:

1. 2100mm overall proprietary height incorporating a 150mm pedestal leg and SAA U section headrail.
2. Full height up to 2700mm as standard floor to ceiling option with 38mm divisions set into a 'U' section floor channel.
3. Full height 2700mm as standard floor to ceiling option with back to back duct panel divisions offering a 100mm service void.

All three formats incorporate Stainless Steel Ironmongery as Standard and are DDA compliant with outward opening doors complete with 'D' handles to ease access where doors are set to fall closed.

Flush44 is available in several different surface finishes including High Pressure Laminate and Natural Wood Veneers complete with rebated Hardwood edges to all doors and pilasters.

NB Hardwood edges will be light oak as standard which may result in a colour variance to the face.

Typical manufacturing period is 5-6 weeks from receipt of approved drawings and colour selection.

Installation by Excelsior is strongly recommended but not essential as a full set of fixing instructions and technical information is provided with the system.



BIM Objects

BIM enables collaborative working; management of information as 'one team' within a digital model holding all the information required to design and construct the project from conception to completion.

Ironmongery

1. Butterfly Turn
2. Indicator Faceplate
3. Rise & Fall Hinge



1.



2.



3.



Ironmongery Finish: Stainless Steel as standard.

Colour Selections: Excelsior preferred cubicle & washroom colour selection or natural veneer.

We recommend that outward opening doors open onto an adjacent solid wall to prevent overstrain on hinges.

Special Notes: Outward opening doors complete with back to back Stainless Steel 'D' Handles.

N.B. Hardwood edges will be light oak as standard which may result in a colour variance to the face.

Flush 30 Cubicle Range

The affordable flush fronted cubicle solution

At Excelsior we have designed the Flush 30 system to be the affordable industry flush facade cubicle offer. Available with HPL surface finishes, Aluminium extruded rebated meeting stiles and SBAA ironmongery as standard.

The Flush 30 system is available in two standard formats.

1. 2100mm overall proprietary height incorporating a 150mm pedestal leg and SAA 38mm U section headrail.
2. Upto 3000mm overall proprietary height incorporating either a 150mm pedestal leg or floor channel (50mm and 100mm legs also available). SAA 38mm U section headrail (top fix to voidspace above) or SAA 40mm P section headrail (back fix if limited void space above).

Both formats incorporate Aluminium ironmongery as standard with outward opening doors complete with D handles to assist access where doors are set to fall closed. (Stainless steel ironmongery available on request).

Flush 30 is available with High Pressure Laminate PUR bonded onto a 28mm MR core, complete with aluminium extruded door and pilaster edges.

The Flush 30 range is available on a typical delivery period of 3-4 weeks from receipt of approved drawings.

Installation by Excelsior is strongly recommended but not essential as a full set of fixing instructions and technical information is provided with the system.



BIM Objects

BIM enables collaborative working; management of information as 'one team' within a digital model holding all the information required to design and construct the project from conception to completion.

Ironmongery

1. Indicator Faceplate
2. Indicator Slide Bolt
3. Aluminium Leg
4. Aluminium Rebated Meeting Stiles





Ironmongery Finish: Excelsior Semi Bright Anodised Aluminium as standard. (Stainless Steel available upon request).

Colour Selections: Excelsior preferred cubicle & washroom colour selection.

Special Notes: Outward opening doors complete with back to back Aluminium 'D' Handles.

Leg Options 150mm as standard with 100mm and 50mm options. Customer to ensure perimeter walls are plumb level at pilaster and partition junctions.

We recommend that outward opening doors open onto an adjacent solid wall to prevent overstrain on hinges.

Planar Cubicle Range

Offering style and strength in harmony

The Planar range of cubicles allows us to offer a sophisticated, premium and sleek rebated flush fronted facade in either 20mm or 12mm compact grade laminate. Attractive semi bright anodised aluminium ironmongery completes a system that is equally at home in a prestigious office development or a new school academy.

Suitable for both shower and WC cubicle environments.

With doors and pilasters available in either 20mm or 12mm thickness as standard and divisions in 12mm thickness the planar cubicle range offers both durability and style in abundance.

This range is suitable for use in humid areas, such as showers, swimming baths, leisure centres etc.

Utilising SBAA ironmongery fixing and accessories as standard ensuring that the system stands up to the rigours of both wet and dry conditions.

Wall & duct panelling and fully framed vanity units can be supplied to complement this system.

The Planar range is available on a typical delivery period of 3-4 weeks from receipt of approved drawings.

The option of digital laminate designs are available subject to additional cost and lead times.

Installation by Excelsior is strongly recommended but not essential as a full set of fixing instructions and technical information is provided with the system.



BIM Objects

BIM enables collaborative working; management of information as 'one team' within a digital model holding all the information required to design and construct the project from conception to completion.

Ironmongery

1. Indicator Faceplate
2. Indicator Slide Bolt
3. Aluminium Leg
4. Aluminium Hinge





Ironmongery Finish: Excelsior Semi Bright Anodised Aluminium as standard. (Stainless Steel available on request).

Colour Selections: Excelsior preferred cubicle & washroom colour selection.

Special Notes: Outward opening doors complete with back to back Aluminium 'D' Handles.

Customer to ensure perimeter walls are plumb level at pilaster and partition junctions.

We recommend that outward opening doors open onto an adjacent solid wall to prevent overstrain on hinges.

T-Line Cubicle Range

The modern and minimalist cubicle solution

The T-Line cubicle range has been created to meet the most discerning specifiers' requirements. Bringing a modern and minimalist feel to the washroom environment in the form of Extruded Satin Anodised Aluminium pilasters and headrail offering a true slimline appearance.

T-Line's specially designed extrusions allow all the doors to sit in the same plane. This system sits equally at home in many different environments from the most prestigious office or hotel development to education or healthcare projects alike.

Wall & duct panelling and fully framed vanity units can be supplied to complement this system.

The T-line range is available on a typical delivery period of 3-4 weeks from receipt of approved drawings and confirmation of all colour finishes.

Installation by Excelsior is strongly recommended but not essential as a full set of fixing instructions and technical information is provided with the system.



BIM Objects

BIM enables collaborative working; management of information as 'one team' within a digital model holding all the information required to design and construct the project from conception to completion.

Ironmongery

1. Indicator Faceplate
2. Indicator Slide Bolt
3. Aluminium Leg
4. Headrail Junction Detail





Ironmongery Finish: Excelsior Semi Bright Anodised Aluminium as standard. (powder coated available upon request).

Colour Selections: Excelsior preferred cubicle & washroom colour selection.

2000mm O/A height as standard.
Full height option available upon request (up to 2700mm).

Special Notes: Outward opening doors complete with back to back Aluminium 'D' Handles and full length 'Z' Section door Stop/Keep.

We recommend that outward opening doors open onto an adjacent solid wall to prevent overstrain on hinges.

Senator Cubicle Range

An elegant and prestigious framed system

The Senator range is a perfect solution where the client requires a 'touch of class' and is equally at home in all environments ranging from prestigious office developments, schools, colleges and leisure facilities. Extruded aluminium profiles and colour co-ordinated panels, produce a most striking visual effect.

Senator's design allows inward and outward opening cubicles to be placed side by side. This provides the ability to incorporate DDA cubicles without altering the external appearance. The Senator indicator bolt is also easily operated by people of all ages and abilities.

Profiles are available in a wide choice of colours and combined with a multitude of laminates, melamine's, solid laminates, textures and patterns, Senator remains the most versatile, adaptable system on the market.

Non-standard powder coated hardware finishes can be supplied which may incur additional cost. Wall & duct panelling and fully framed vanity units can be supplied to complement this system.

The Senator range is available on a typical delivery period of 3-4 weeks from receipt of approved drawings and confirmation of all colour finishes.

Installation by Excelsior is strongly recommended but not essential as a full set of fixing instructions and technical information is provided with the system.



BIM Objects

BIM enables collaborative working; management of information as 'one team' within a digital model holding all the information required to design and construct the project from conception to completion.

Ironmongery

1. Indicator Faceplate
2. Indicator Slide Bolt
3. Aluminium Leg
4. Aluminium Hinge



1.



2.



3.



4.



Ironmongery Finish: As specification options above (available with powder coated indicator faceplates if extrusions are powder coated).

Colour Selections: Excelsior preferred cubicle & washroom colour selection.

Special Notes: Outward opening doors complete with back to back Aluminium 'D' Handles and full length 'Z' Section door Stop/Keep

We recommend that outward opening doors open onto an adjacent solid wall to prevent overstrain on hinges.

Skyline Cubicle Range

The elegant and discreet full height system

Meeting the demands of modern education and mixed use environments, Skyline is a floor to ceiling system providing the user with maximum privacy and comfort. A full range of complimentary duct panels and vanity units are available on request.

Perfect for locations where greater user privacy is required. The Skyline system is an extension of our proprietary height cubicle system providing a floor to ceiling application with an aluminium floor channel or an alternative pedestal leg option to create a standard floor clearance.

The Skyline Range is available in 3 different specification board options to meet both budget and durability requirements.

Hardware is available in a standard semi bright aluminium finish with bespoke colours and finishes available on request at an additional cost.

Panel and door colours can be selected from a large range of preferred laminate manufacturers.

Wall & duct panelling and fully framed vanity units can be supplied to complement this system.

The Skyline cubicle range is available on a typical delivery period of 3-4 weeks from receipt of approved drawings and confirmation of all colour finishes.

Installation by Excelsior is strongly recommended but not essential as a full set of fixing instructions and technical information is provided with the system.



BIM Objects

BIM enables collaborative working; management of information as 'one team' within a digital model holding all the information required to design and construct the project from conception to completion.

Ironmongery

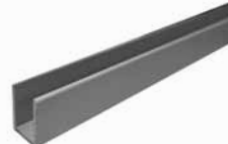
1. Indicator Faceplate
2. Indicator Slide Bolt
3. U Channel Baserail
4. Aluminium Hinge



1.



2.



3.



4.



Ironmongery Finish: Excelsior Semi Bright Anodised Aluminium as standard.

Colour Selections: Excelsior preferred cubicle & washroom colour selection.

Special Notes: Outward opening doors complete with back to back Aluminium 'D' Handles and full length 'Z' Section door Stop/Keep.

Partitions may be supplied in 2 pieces to meet CDM/Manual Handling constraints.

Partitions fitted into floor fixed U channel and finished 20mm below ceiling height. Doors and pilasters 10mm floor clearance

Leg Options: 50mm, 100mm and 150mm available in lieu of floor channel if required.

Optik Cubicle Range

The attractive wet and dry cubicle solution

The Optik Range Glass cubicle system can be specified for both Shower and WC purposes, offering an attractive and stylish visual solution that only glass can. Quality stainless steel bolt through fittings and headrails in conjunction with white screen printed toughened glass panels.

Suitable for both shower and WC cubicle environments.

Door, Division and Pilaster panel elements are manufactured from 10mm clear glass and faced one side with a RAL 9010 white screen print prior to being kiln toughened at which point the paint finish fuses into the glass giving an extremely durable surface finish.

Utilising stainless steel ironmongery fixings and accessories as standard ensuring that the system stands up to the rigours of both wet and dry usage conditions.

Wall & duct panelling and fully framed vanity units can be supplied to complement this system.

The Optik range is available on a typical delivery period of 3-4 weeks from receipt of approved drawings.

Installation by Excelsior is strongly recommended but not essential as a full set of fixing instructions and technical information is provided with the system.



BIM Objects

BIM enables collaborative working; management of information as 'one team' within a digital model holding all the information required to design and construct the project from conception to completion.

Ironmongery

1. Indicator Turn Bolt
2. Hinge
3. Headrail Clam
4. Indicator Faceplate





Ironmongery Finish: Satin Stainless Steel as standard.

Colour Selections: Standard Finish RAL 9010 White to rear of glass face (Other RAL colours available subject to quantity)

Special Notes: Outward opening doors complete with back to back Stainless Steel 'D' Handles.

We recommend that outward opening doors open onto an adjacent solid wall to prevent overstrain on hinges.

Mariner Cubicle Range

Hard wearing, resistant & durable cubicle system

The Mariner Range is ideal for harsh environments utilising vandal & water resistant Compact Solid Grade Laminate. Multiple hardware options offer greater design flexibility.

The Mariner range offers an extended life cycle under normal usage conditions.

A heavy duty, vandal and water resistant system, utilising compact solid grade laminate suited to applications where the panelling is at risk from harsh environmental factors or abuse by users.

Vandal resistant fittings are provided in aluminium as standard or stainless steel to compliment the smooth radius black core edges.

This range is suitable for use in humid areas (i.e. Showers, swimming baths or leisure centres) and harsh environments such as industrial and public areas vulnerable to vandalism.

Bespoke powder coated hardware finishes available at an additional cost.

Wall & duct panelling and fully framed vanity units can be supplied to complement this system.

The Mariner range is available on a typical delivery period of 3-4 weeks from receipt of approved drawings and confirmation of all colour finishes.

Installation by Excelsior is strongly recommended but not essential as a full set of fixing instructions and technical information is provided with the system.



BIM Objects

BIM enables collaborative working; management of information as 'one team' within a digital model holding all the information required to design and construct the project from conception to completion.

Ironmongery

1. Indicator Faceplate
2. Indicator Slide Bolt
3. Aluminium Leg
4. Aluminium Hinge



Ironmongery

1. Indicator Faceplate
2. Indicator Thumb Turn
3. Stainless Steel Leg
4. Stainless Steel Hinge





Ironmongery Finish: Excelsior Semi Bright Anodised Aluminium as standard. (Stainless Steel available on request).

Colour Selections:
Excelsior preferred cubicle & washroom colour selection.

Available as standard at 1960mm high. 2100mm available at additional cost.

Special Notes: Outward opening doors complete with back to back Aluminium 'D' Handles and full length 'Z' Section door Stop/Keep

We recommend that outward opening doors open onto an adjacent solid wall to prevent overstrain on hinges.

Select Cubicle Range

An efficient, practical & robust cubicle system

The Select Range is a tried and tested cubicle system comprising of High Pressure Laminate faced components, incorporating Excelsior's own Aluminium range of Ironmongery as standard. The range offers 2 pilaster options which include a 20mm square edged version and a 30mm postformed version.

Suitable for applications where superb appearance and medium use durability is required. Commercial office and educational environments can be greatly enhanced by the use of this attractive range.

Each panel element is edged with matching high impact 2mm ABS to enhance aesthetic appearance.

Cubicle ironmongery is provided in a semi bright anodised aluminium finish as standard. Bespoke powder coated hardware can be supplied at an additional cost.

This range is not suitable for use in areas of high humidity (e.g. Showers).

Wall & duct panelling and fully framed vanity units can be supplied to complement this system.

The Select range is available on a short term delivery basis, typically 3-4 weeks from receipt of approved drawings.

Installation by Excelsior is strongly recommended but not essential as a full set of fixing instructions and technical information is provided with the system.



BIM Objects

BIM enables collaborative working; management of information as 'one team' within a digital model holding all the information required to design and construct the project from conception to completion.

Ironmongery

1. Indicator Faceplate
2. Indicator Slide Bolt
3. Aluminium Leg
4. Aluminium Hinge





Ironmongery Finish: Excelsior Semi Bright Anodised Aluminium as standard.

Colour Selections: Excelsior preferred cubicle & washroom colour selection.

All Heights Subject to Material/Colour Selection. Images are a non standard gloss finish, available at additional cost

Special Notes: Outward opening doors complete with back to back Aluminium 'D' Handles and full length 'Z' Section door Stop/Keep. 2100mm cubicle height available at additional cost.

We recommend that outward opening doors open onto an adjacent solid wall to prevent overstrain on hinges.

Excelsior Materials Suitable for Wet Areas

Hardwearing resistant and durable systems

Excelsior offer Solid Grade Laminate and Glass Cubicles in wet areas and areas of high humidity. All of our ranges with these core materials are suited to these environments.

Both standard and full height systems are popular; each system has differing merits dependant on the clients vision.

Bespoke packages are available, inclusive of shower enclosure, duct panelling, bench seating, towel rail/clothes rail and lockers. Packages are built to suit individual clients specification and dimensions creating a one off distinctive appearance.

The combination of clean lines and self supporting core material produce a cubicle suitable to undertake the daily wear and tear associated with high use areas such as Swimming Centres, Gymnasiums, Hospitals and so on.

SGL - Solid Grade Laminate

Solid Grade Laminate is ideal for wet and humid environments and extremely resistant to impact.

Nominally 12.5mm in sheet thickness with radiused and polished solid black edges.

Ideal for use in the harshest of environments such as schools and leisure centres.



BIM Objects

BIM enables collaborative working; management of information as 'one team' within a digital model holding all the information required to design and construct the project from conception to completion.

Ironmongery

1. Indicator Faceplate
2. Indicator Slide Bolt
3. Aluminium Leg
4. Aluminium Hinge



4.



Ironmongery Finish: Excelsior Semi Bright Anodised Aluminium as standard. (Stainless Steel available on request).

Colour Selections: Excelsior preferred cubicle & washroom colour selection.

We recommend that outward opening doors open onto an adjacent solid wall to prevent overstrain on hinges.

Special Notes:

If applicable: Outward opening doors come complete with back to back aluminium 'D' Handles and full length 'Z' Section door Stop/Keep.

Harlequin Cubicle Range

The practical vibrant and versatile children's range

Excelsior's flexible children's cubicle range. Available in various design options to suit any budget for school and nursery environments.

Specifically designed with children in mind, the low level profiled curves to the doors and partitions enable adult supervision whilst full height pilasters provide a robust structure and safe access for adults.

Two material specifications can be provided within the Harlequin system, High Pressure Laminate (Harlequin Select) and Compact Laminate (Harlequin Mariner).

In addition, the Harlequin Peardrop system profile provides a self supporting low level alternative to the standard Harlequin cubicle design. Available in HPL and SGL board specifications. The rigidity of the cubicle is determined by the Excelsior designed support frames and the ability of these legs to perform is reliant on the strength of the floor.

Hardware is available in SBAA as standard with a selection of powder coated finishes including Red, Yellow & Blue at an additional cost.

Digital print door designs are also available at an additional cost.

Panel and door colours can be selected from our preferred laminate range of preferred laminate manufacturers.

'Peardrop' low level option:

- A safe & practical range for children of nursery and pre-school age.
- No sharp edges or corners.
- The Peardrop profile can be provided at low level without the requirement of a headrail support, however the floor construction must provide the necessary fixing strength.
- Tough, easy to clean, durable finish.
- Suitable for all dry washroom environments.

BIM Objects

BIM enables collaborative working; management of information as 'one team' within a digital model holding all the information required to design and construct the project from conception to completion.

Digital Prints

1. Art Attack
2. Lolly Pop
3. Under The Sea



1.



2.



3.



Ironmongery & Headrail Finish: Excelsior Preferred Semi Bright Anodised Aluminium as standard.

Colour Selections: Excelsior preferred cubicle & washroom colour selection. Digital print designs available at extra cost.

Special Notes: Harlequin Peardrop needs to be fitted to a solid floor with 2nr 75mm x 8mm screw bolts to each leg.

We recommend that outward opening doors open onto an adjacent solid wall to prevent overstrain on hinges.

Alaglide® Cubicle Range

The revolutionary emergency access, space saving range

Alaglide® range by Excelsior offers a space saving solution with a two step emergency access. A larger cubicle entrance provides 25% more usable width compared to conventional cubicles making this system the perfect choice for areas with limited space.

Excelsior's Alaglide® Cubicle Range is the perfect choice for tight spaces. The use of Solid Grade Laminate doors and partitions ensures this system has the highest quality components suitable for all environments. Compared to the traditional swing method the mechanical movement of this system sees the door positioned entirely along one of the two side panels, not taking up any space.

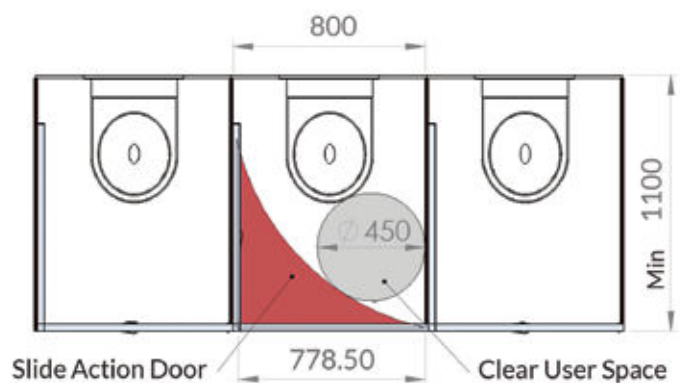
Operating without the aid of hinges and frames the doors roto-translation and sliding action provides a gain of between 36% & 66% in terms of overall available space within the washroom.

A further benefit of this sliding action is the user does not have to move position to open and close the door which is hugely beneficial to disabled users.

The Alaglide® Cubicle range comes complete with a unique emergency exit mechanism, operated with a universal safety key. To ensure maximum safety, the universal safety key allows authorised personnel to enter by releasing the door panel turning it into an outwards-opening swing door. This swift two step method can be performed by a single person ensuring no time is lost should there be an emergency situation.

Adjustable feet from 120/150mm, finger protection seals, external handle and emergency access latch turn keys are additional features with this system.

Alaglide® Cubicle System



BIM Objects

BIM enables collaborative working; management of information as 'one team' within a digital model holding all the information required to design and construct the project from conception to completion.

Aluminium Ironmongery

1. Indicator Faceplate
2. Emergency Release Hinge
3. Adjustable Leg
4. Headrail



1.



2.



3.



4.



Colour Selections: Excelsior preferred cubicle & washroom colour selection.

Ironmongery Finish: Polycarbonate/Aluminium Ironmongery.

Summit Cubicle Range

Environmentally friendly and 100% recyclable panels

Our **SUMMIT CDF** cubicle range is produced using sustainable certified panel materials complete with ironmongery of which all are 100% recyclable at the end of their lifespan.

CDF is produced in Switzerland using certified and sustainable materials and manufactured into cubicle and washroom components at our factory in the West Midlands.

Bio mass energy is used to produce these innovative panels. The energy generated from this environmentally friendly process is 95% renewable verses more than 80% fossil fuels used for the production of similar or existing materials.

CDF is more than 350kilos m3 (30%) lighter in weight verses compact grade laminate, as such the consumption of fossil fuels for transportation as well as the impact on the environment is significantly reduced.

Being 30% lighter in weight also highlights that less phenol resin is used in the production of CDF again benefitting the environment and the panels are 100% recyclable at the end of their life span as they can be processed back into fibres to make new panels.

CDF can also be burnt in biomass without impact to the environment to create energy.



BIM Objects

BIM enables collaborative working; management of information as 'one team' within a digital model holding all the information required to design and construct the project from conception to completion.

Ironmongery

1. Indicator Faceplate
2. Indicator Slide Bolt
3. Aluminium Leg
4. Aluminium Hinge



1.



2.



3.



4.

Ironmongery

1. Indicator Faceplate
2. Indicator Thumb Turn
3. Stainless Steel Leg
4. Stainless Steel Hinge



1.



2.



3.



4.



Ironmongery Finish: Excelsior Semi Bright Anodised Aluminium as standard. (Stainless Steel available on request).

Colour Selections: Excelsior Kronoswiss CDF Cubicle & Washroom Colour Selections.

We recommend that outward opening doors open onto an adjacent solid wall to prevent overstrain on hinges.

Special Notes:

If applicable: Outward opening doors come complete with back to back aluminium 'D' Handles and full length 'Z' Section door Stop/Keep.

Hydroline Cubicle Range

A robust, high performance self supported system

The only choice for the serious leisure operator, cost effective, low maintenance, long life span (in excess of ten years) and above all good looks.

The Hydroline fully framed cubicle system has been specially designed for use in demanding municipal changing areas, washrooms and public toilets. Combining clean lines with extreme strength, the cubicles are very effective against the daily wear and tear associated with high use areas.

Hydroline has been engineered from the highest quality aluminium extrusions and is designed to be used in conjunction with 12mm Compact Grade Laminate panels. The stylish design, combined with strong framework and panels, makes the system extremely robust and ideal for all wet or dry public environments.

Hydroline is available in a variety of durable powder coated colours, which ensures the system is suitable for a variety of projects. The system also offers a unique anti-finger trap door design, which is essential for areas where children of all ages are present. The cubicles also feature vandal resistant doorframes, with anti-lift off, heavy duty hinges that will withstand the most punishing environments.



BIM Objects

BIM enables collaborative working; management of information as 'one team' within a digital model holding all the information required to design and construct the project from conception to completion.

Ironmongery

1. Leg & Hinge Details
2. Indicator Faceplate
3. Headrail Endcap
4. D Handle



1.



2.



3.



4.



Special Notes: Outward opening doors complete with back to back aluminium 'D' Handles.

Increased height radius profiled divisions (upto 2600mm high) available at an additional cost.

We recommend that outward opening doors open onto an adjacent solid wall to prevent overstrain on hinges.

Ironmongery Finish: RAL 9016 White; RAL 9001 Pearl White; RAL 9011 Black; RAL BS; 00A05 Steel Silver.

Colour Selections: Excelsior preferred cubicle & washroom colour selection.

Anti-peep rails to tops of cubicles available at an additional cost.

Option Cubicle Range

The clean, economic & versatile cubicle system

The Option range is Excelsior's most cost effective and long standing cubicle system, utilising 19mm Melamine Faced Chipboard and offering a price economy to suit all budgets yet still maintaining a strong visual presence.

Option Plus Range allows us to offer a 20mm postformed HPL Pilaster frontage with 19mm Melamine faced chipboard doors and partitions.

Option Range allows for a MFC square 2mm ABS edged pilaster frontage with 19mm Melamine faced chipboard doors and partitions.

Suitable for light to medium use environments and available in a range of plain, pattern and woodgrain melamine faced chipboard colour finishes offered by Sonae.

Each panel element is edged with matching high impact 2mm softform ABS to enhance aesthetic appearance, with the Option Plus range offering an upgrade to HPL postformed pilasters.

Cubicle fixings and accessories are provided in a durable semi bright anodised aluminium.

Wall & duct panelling and fully framed vanity units can be supplied to complement this system.

Option range suitable for dry areas only.

The Option range is available on a short term delivery basis, typically 2-3 weeks from receipt of approved drawings.

Installation by Excelsior is strongly recommended but not essential as a full set of fixing instructions and technical information is provided with the system.



BIM Objects

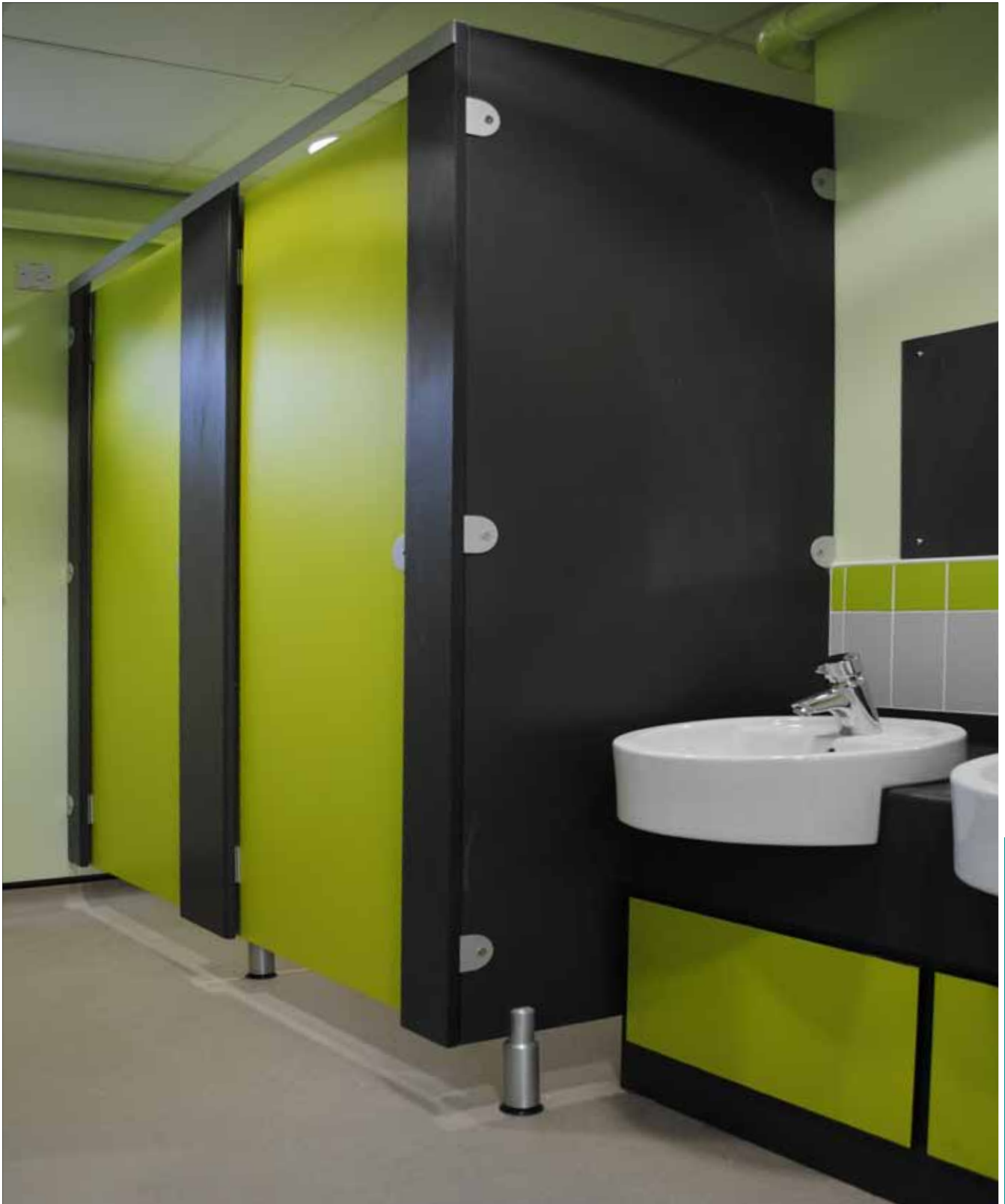
BIM enables collaborative working; management of information as 'one team' within a digital model holding all the information required to design and construct the project from conception to completion.

Suitable for dry areas only.

Ironmongery

1. Indicator Faceplate
2. Indicator Slide Bolt
3. Aluminium Leg
4. Aluminium Hinge





Ironmongery Finish: Excelsior Semi Bright Anodised Aluminium as standard.

Colour Selections: Excelsior Sonae MFC cubicle & washroom colour selection.

Special Notes: Outward opening doors complete with back to back aluminium 'D' Handles and full length 'Z' Section door Stop/Keep.

We recommend that outward opening doors open onto an adjacent solid wall to prevent overstrain on hinges.

Healthcare Panelling Range

Sector proven Healthcare panelling solution

At Excelsior we offer a number of sector related pre-hung duct panel solutions to meet all your healthcare requirements. Including hospitals, clinical surgeries and acute facilities. Furthermore we are able to offer the provision of pre-plumbed sanitary ware if desired.

All our panel sets can be manufactured to suit sanitaryware and location requirements. Panel widths are variable to suit client requirements and are available in either solid grade laminate (SGL) or either square edged or postformed high pressure laminate (HPL).

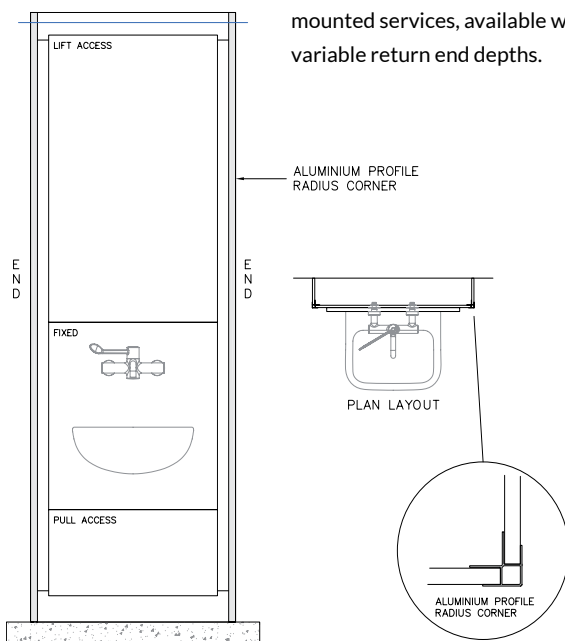
The panels are set onto a wood frame as standard, however aluminium frames are available upon request with lead times generally 3-4 weeks (from approval of drawings and receipt of all information). All panel sets are also available with hinged and lockable top panels at an additional cost.

Installation by Excelsior is strongly recommended but not essential as a full set of fixing instructions and technical information is provided with the system.



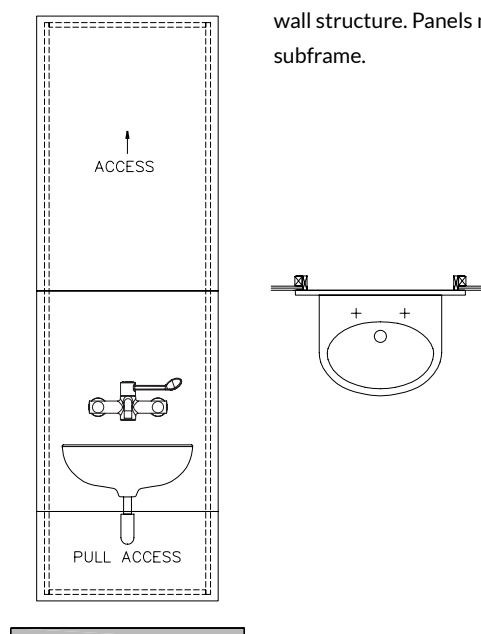
Clinical WHB Boxed Out

Boxed out option to hide surface mounted services, available with variable return end depths.



Clinical WHB Recessed

Recessed option set into aperture in wall structure. Panels mounted onto subframe.





Excelsior **ALUMINIUM FRAME SYSTEM** available for wet and dry areas to suit clients requirements

Excelsior healthcare panelling systems are fully compliant with NHS estate guidelines

Duct Panelling Range

The complete pre-hung duct panelling solution

At Excelsior we offer fully framed, pre-hung washroom duct and wall panel systems with all face panels factory mounted onto either timber or aluminium subframe systems.

(To suit environment conditions)

Duct panelling comes in differing configurations and covers a multitude of functionalities.

Washroom duct panelling provides a practical and functional choice for hiding pipework, cables, wastes etc. Not only are these services aesthetically hidden they are also accessible with options of secret fixed lift off panels and hinged keyed access panels.

The smooth finish of the panels provides a hygienic and easy to clean surface.

As with all our systems the core material is paramount and must be suitable for its intended environment.

We offer High Pressure Laminate, Compact Density Fibre Board & Solid Grade Laminate. With 40 years experience manufacturing in the industry our team are experts in advising customers on the most suitable material for the intended use.

All of our Duct assemblies are bespoke manufactured to suit individual requirements and to accommodate sanitaryware and DDA provision.



BIM Objects

BIM enables collaborative working; management of information as 'one team' within a digital model holding all the information required to design and construct the project from conception to completion.



Colour Selections: Excelsior preferred cubicle & washroom colour selection.

Excelsior Aluminium Frame System available for wet and dry areas to suit clients requirements Natural wood veneers (Select Plus) also available upon request

Vanity Unit Range

Durable & attractive vanity unit

At Excelsior we offer an extensive range of fully framed Vanity Units providing our customers an excellent selection of worktop surface finishes to suit all environments.

There is an extensive array of finishes and styles for Vanity Units dependant on budget, environment and available space.

As a guide Excelsior's standard vanity units are available in a depth of 315mm to accommodate a semi recessed bowl which would be the ideal choice where space is limited and 600mm to accommodate an inset or sit on bowl suited to a larger washroom.

Excelsior specialise in post-forming which offers the client increased security against water ingress at the upstand and downstand junctions. CNC factory cut Compact Density Fibreboard is offered as standard for all of our base frames, offering enhanced moisture resistance, ensuring longevity and complete customer satisfaction.

The vast array of possible combinations of base unit, vanity top material and bowls allow the client to be creative and innovative with their choices, that coupled with Excelsior's bespoke manufacturing capabilities ensures an attractive combination.

Standard Vanity Top Options:

- 13mm Solid Surface.
- 20mm Granite.
- Quartz Conglomerate.
- 10mm CDF postformed HPL.



BIM Objects

BIM enables collaborative working; management of information as 'one team' within a digital model holding all the information required to design and construct the project from conception to completion.



Frame Construction/System Support:

- Panels fix onto frontage framework using hook on or push fit clips
- Worktop Subframe - 18/36mm MR MDF pre-assembled frame with WBP plywood support rails

- Hinged access panels c/w keyed budget lock available at additional cost

Colour Selections: Excelsior preferred cubicle & washroom colour selection.

Magma Trough Range

Modern and durable solid surface vanity top range

Excelsior's 100% Acrylic Solid Surface Range is extremely durable and aesthetically pleasing. Complete with numerous base options our Magma Range offers a solution to satisfy all specification requirements.

We have designed our Magma Trough Unit Range to offer an attractive washroom solution and satisfy specification requirements, always with quality, good looks and durability in mind.

Following a fully framed slab theme we offer three different generic designs with integral rear upstand/ backsplash options as standard:

SL – Continuous Sloping Slab Design

BA – Continuous Deep Tub Design

WV – Continuous Wave Trough Bed

Fully supported onto zinc plated and powder coated metal support frames with an option to include a laminated access frontage to conceal all M&E works, or access cupboards for bin storage.

Square internal corners and junction abutments are manufactured as standard.

Bespoke designs and profiles can also be manufactured to suit individual client requirements with virtually no limitations.

Trough Surface Material Specifications:

13mm Solid Surface (Colour to be selected from Excelsior preferred ranges) with square internal corners/ junctions as standard.

BIM Objects

BIM enables collaborative working; management of information as 'one team' within a digital model holding all the information required to design and construct the project from conception to completion.



Access Panel Specification:

Option A: High Pressure Laminate bonded onto 18mm MR MDF core panels post lipped with 2mm ABS edge finish or Postformed Vertical edges.

Option B: 12mm Compact Grade Laminate. Black core radius and polished edge finish

Underframe Frontage:

High Pressure Laminate bonded onto 10mm CDF Core and balanced to reverse. Plinth incorporates 1mm ABS edge detail at floor junction to prevent moisture ingress. All cut outs and remaining edges as cut.

All seen edges post lipped with matching 2mm ABS edge finish. All unseen edges as cut.



Frame Construction/System Support:

- Panels fix onto a laminated frontage framework using hook on or push fit clips
- Worktop Subframe – Zinc Plated and Powder coat finished 38 x 38mm Steel Box section Cantilevered Frame Supports

- Hinged access panels c/w keyed budget lock available at additional cost

Colour Selections: Excelsior preferred cubicle & washroom colour selection.

Bench Seating Range

The ultimate bench seating cloakroom solution

Our extensive range of Bench Seating will satisfy all your changing area and cloakroom requirements. Specialising in the Leisure, Education and Workplace facility environments. Included within our offer are three specific seat options and numerous frame permutations.

Excelsior's extensive range of bench seating covers all eventualities and ensures there is a design to suit every client's requirements.

Each customer's requirements differ, dependant on the intended location and setting. The suitability of materials and finishes vary in wet and dry areas. Choosing the correct core material is just as important as creating a desirable visual finish and the team at Excelsior have a wealth of experience in ensuring the correct product is matched to the milieu.

Seat options and finishes fluctuate and are bespoke to each individual customer. Integral or loose coat rails are an option as are seat backs and so on.

As with all of our ranges Excelsior endeavour to work with the customer and our open-minded approach and manufacturing capabilities ensure we can offer the customer exactly what they need.

Framework Specification:

Excelsior Hydroline Oval Bench Seating.

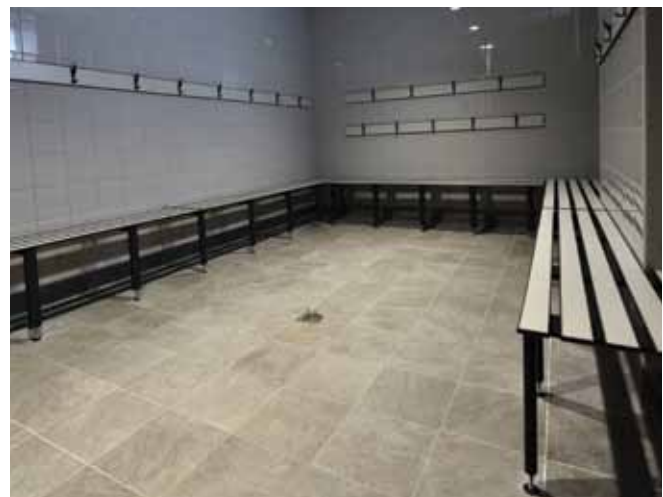
- 60mm x 30mm powder coated oval section.
- C/W adjustable feet.

Excelsior Hydroline Square Bench Seating.

- 38mm x 38mm powder coated steel box section.
- C/W adjustable feet.

BIM Objects

BIM enables collaborative working; management of information as 'one team' within a digital model holding all the information required to design and construct the project from conception to completion.



**Finishes:**

Frame Colours: Signal Black (RAL 9004), Graphite Grey (RAL 7024) or Silver Grey (RAL 9006) as standard (other colours available on request).

Hardwood Slats: Solid 25mm Ash Hardwood. Finished with 2 coats of AC Lacquer.

Solid Grade Laminate Slats/Seats: 12mm SGL from Excelsior Cubicle & Washroom Colour Selection.

Excelsior Locker Range

Durable, functional and hardwearing locker range

We offer an extensive range of Lockers to satisfy all of your changing area and storage requirements. Specialising in the Leisure, Education and Workplace facility environments 'from creation to installation... you can rest assured'

Locker specifications vary dependant on the environment they are situated. Excelsior offer a locker range to suit all environments from Corporate Office to Industrial shop floor to Leisure Centre.

Each environment necessitates an individual specification all of which Excelsior Manufacture.

Locker Body Options:

- 18mm Melamine Faced Chipboard with 2mm ABS edges (to seen edges only).
- 1.0mm thick Aluminium Sheet with 12mm SGL doors.
- 0.7mm thick mild steel with 10mm SGL doors.
- 0.7mm thick mild steel with 0.9mm thick mild steel doors.

Door options vary from Natural Hardwood Veneer, High Pressure Laminate, Solid Grade Laminate, Compact Density Fibreboard or 0.9mm mild steel doors.

As a guide to configurations our standards are as follows:

Single Tier, 2 Tier, 3 Tier & 4 Tier.

Overall Height 1800mm x 464mm overall depth, with 300mm, 400mm and 450mm width options.

Z Type locker

Each specification creates an individual look from high to end to utilitarian however our commitment to supply a durable, comprehensive hard wearing product remains steadfast across all of our ranges.



BIM Objects

BIM enables collaborative working; management of information as 'one team' within a digital model holding all the information required to design and construct the project from conception to completion.



Lock Options: Cam lock with 2 keys as standard, coin return, digital, combination, hasp and staple also available upon request.

Colour Selections: Excelsior preferred cubicle & washroom colour selection and Natural Wood Veneer.

Special Notes: Integral benching available upon request.

Paper Towel Dispensers



Product Code: ED-77017CB
Z Fold Paper Dispenser (Large)

- Sleek and contemporary design.
- Simple to clean and finger paint resistant.
- Surface designed to enhance hygiene standards and make cleaning easier.
- Viewing window helps the customer check paper towel levels and ensure towels are always available.
- Paper towels kept clean, dry and free from contamination.
- Tamper-proof, lockable cover.



Product Code: ED-77127SS
C/Multi-fold (Large) Paper Towel Dispenser

- Robust stainless steel construction which protects paper from spoiling.
- Excellent for demanding locations.
- Visual indicator ensuring the paper need never run out.
- Designed for either C fold or multi-fold interleaved paper hand towels.
- Fixing kit included.



Product Code: ED-78830SS
C/Multi-fold Paper Towel Dispenser

- Anti Ligature dispenser .
- Sloping tops.
- Established proven technology to ensure reliability.
- Quality brushed stainless steel finish.
- No sharp corners.
- Robust, tamper-proof, lockable cover.
- Flush fitting backplate Fully seam welded.



Product Code: 4THL-WB
Modular Hand Towel Dispenser

- Versatile design: fits interleaved, C-fold, Z-fold, single towel dispensing minimises waste.
- Strong and versatile towel outlet slot.
- Single towel dispensing to minimise waste.
- Easy-view window to check towel levels for better stock management.



Product Code: 14.7080.02.004
Paper Towel Dispenser

- D Line Paper Towel Dispenser.
- Use of non-corrosive rust-resistant stainless steel appropriate for high humidity levels in the bathroom setting.



Product Code: 14.7080.02.005
Paper Towel Dispenser (with lid)

- D Line Paper Towel Dispenser with Top Lid.
- Use of non-corrosive rust-resistant stainless steel appropriate for high humidity levels in the bathroom setting.



Product Code: EXBB-262
Surface Mounted Paper Towel Dispenser

- Stylish Satin Finish Surface-mounted Paper Towel Dispenser.
- C-fold and multi-fold paper towels.
- Type-304 stainless steel with all-welded construction.
- Door fitted with full-length stainless steel piano-hinge.
- Keyed tumbler lock for access.
- Anti-tear hemmed dispenser tray.
- Slots in side of cabinet to indicate refill time.

Toilet Paper Dispensers



Product Code: ED-83650CB

Jumbo Toilet Roll Dispenser

- Sleek and contemporary design.
- Simple to wipe clean and finger paint resistant. Surface designed to make cleaning easier.
- Viewing window helps the customer check paper levels.
- Jumbo rolls are kept clean and dry, and free from contamination.
- Tamper-proof, lockable cover.
- Easy to fill and top up.



Product Code: ED-83710SS

MK4 Midi Jumbo Toilet Paper Dispenser

- High grade brushed stainless steel.
- Full back plate gives added strength and stability.
- A surface mounted toiled tissue dispenser.
- Ideal for exclusive washrooms located in offices, hotels, bars and restaurants.
- Key locking mechanism, with slam lock



Product Code: ED-EXBB-2890

Jumbo Roll Toilet Paper Dispenser

- Surface Mounted Single Jumbo-Roll Toilet Tissue Dispenser.
- Stainless Steel with Satin Finish.
- Door equipped with keyed lock.
- Unit is designed for quick reloading as door swings down for loading dispenser.
- Door contains slot to reveal toilet tissue supply inside cabinet.



Product Code: 4TJM-WB

Modular White Plastic Jumbo Roll Holder

- Brightwell Modular Medium White Plastic Jumbo Roll Holder.
- For perforated and non-perforated paper.
- Blue coloured viewing window.
- Effortless restocking.



Product Code: 14.7086.02.200

Maxi Jumbo Roll Holder (Large)

- D Line Maxi Jumbo Toilet Roll Holder.
- Use of non-corrosive rust-resistant stainless steel appropriate for high humidity levels in the bathroom setting.



Product Code: ED-77019CB

2 Roll Toilet Paper Dispenser

- Sleek and contemporary design.
- Simple to clean and finger paint resistant.
- High capacity unit contains two long lasting rolls stacked on top of each other as one roll finishes, the other drops into position reducing the risk of running out of paper.
- Dispenser keeps toilet paper clean, dry and free from contamination.



Product Code: EXBB-543

Single Toilet Tissue Dispenser

- Toilet Tissue Dispenser.
- Type-304 stainless steel with satin finish.
- Concealing mounting flange equipped with two screw holes for attachment and thread on outside of edge to fasten cover.
- Threaded flange cover shall fasten over mounting flange to conceal mounting screws.



Product Code: 14.7056.02.242

Bathroom Single Toilet Roll Holder

- D Line Bathroom Single Toilet Roll Holder.
- Glass blasted bracket, with concealed fixing AISI 316 satin stainless steel.
- Use of non-corrosive rust-resistant stainless steel appropriate for high humidity levels in the bathroom setting.
- Versatile design: fits interleaved, C-fold, Z-fold, single towel dispensing minimises waste.

Toilet Paper Dispensers



Product Code: 14.7062.02.016

Bathroom Spare Toilet Roll Holder

- D Line Spare Toilet Roll Holder.
- With Snap on Cover.
- Use of non-corrosive rust-resistant stainless steel appropriate for high humidity levels in the bathroom setting..



Product Code: EA-T600

Deluxe SS Toilet Roll Holder

- Deluxe Stainless Steel Single Toilet Roll Holder.
- Wood Screws Supplied.
- Concealed Fix.



Product Code: EA-T610

Budget SS Toilet Roll Holder

- Budget Stainless Steel Single Toilet Roll Holder.
- Wood Screws Supplied.
- Stainless Steel Roller.

Recessed Range



Product Code: ED-92280SS

Paper Towel Dispenser

- Stylish brushed stainless steel paper towel dispenser.
- Clean ergonomic design.
- Suitable for 100mm wall cavities.
- Durable stainless steel recessed enclosure.
- Available individual unit or with waste bin & warm air dryer.
- Fully seam welded fabrication.
- Adjustable to take either C or multi fold interleaved paper towels.
- Excellent for demanding location.



Product Code: ED-92282SS

Warm Air Dryer

- Slim Line Warm Air Dryer designed for 100mm wall cavities.
- 'No Touch' automatic operation by infrared sensor built into air outlet.
- CE marked.
- Clean ergonomic design as stand alone or fitted with paper towel and waste bin.
- Durable stainless steel recessed enclosure.



Product Code: ED-92284SS

18 Litre Waste Bin

- Stylish brushed stainless steel waste bin.
- Clean ergonomic design.
- Suitable for 100mm wall cavities.
- Durable stainless steel recessed enclosure.
- Available as individual unit or with paper towel dispenser and warm air dryer.
- Fully seam welded fabrication.
- 18 Litre waste bin with integral plastic line.

Behind The Mirror



Product Code: ED-92296SS

Tapered End Paper Towel Dispenser

- Brushed stainless steel 'behind the mirror' paper towel dispenser.
- Loaded through spring loaded flaps at the base.
- Uses C fold or multi-fold interleaved paper hand towels.
- Utilises the behind mirror cavity.



Product Code: ED-92022SS

Recessed Warm Air Dryer

- Discreetly hidden within the 'behind the mirror' cavity.
- Warm Air Dryer Automatic start/stop.
- CE approved.
- Suitable for high traffic locations.



Product Code: ED-92020SS

0.4 Litre Liquid Soap Dispenser

- Lever operated 'Behind the Mirror' 0.4ltr liquid soap dispenser.
- Unique lockable slide open to access refill mechanism.
- Fixed in line with base of cabinet Utilises the cavity behind the mirror.
- Fixing kit included.

Toilet Brush & Holder



Product Code: 14.7061.02.100

Bathroom Toilet Brush & Holder

- D Line Spare Toilet Roll Holder.
- With Snap on Cover.
- Use of non-corrosive rust-resistant stainless steel appropriate for high humidity levels in the bathroom setting.



Product Code: 14.7060.02.007

Bathroom Box Set

- D Line Bathroom Box Set.
- Contains: Toilet Brush, Toilet Roll Holder with Steel Bracket, Spare Toilet Roll holder and 2 Hooks w/pin.
- All parts produced in AISI 316 satin stainless steel.
- Design characterised by simplicity and functionality.
- Advanced technology ensures the products strength and durability.

Soap Dispensers



Product Code: ED-50018CB
Liquid Soap Dispenser

- Simple to wipe clean and fingerprint resistant.
- Compact design but the generous 1 litre capacity dispenses 100 shots of liquid.
- Viewing windows allow for easy consumable level check.
- Robust, tamper-proof, lockable cover.
- Soap dispenser complies with relevant global legislation.



Product Code: ED-50410
1 Litre Liquid Soap Dispenser

- Stylish Polished Stainless Steel Liquid Soap Dispenser with push action dispensing.
- Cover hinges forward to give easy access to refill the soap reservoir.
- Locking mechanism.
- Dispenses 1000 shots per litre.
- Snap shut closing for easy filling.
- Fixing kit included.



Product Code: ED-50060SS
1 Litre Liquid Soap Dispenser

- Anti Ligature soap dispenser .
- Sloping tops Established proven technology to ensure reliability.
- Quality brushed stainless steel finish.
- No sharp corners Robust, tamper-proof, lockable cover.
- Flush fitting back plate Fully seam welded.



Product Code: EXBB-8226
Counter Mounted Spout Soap Dispenser

- Counter Mounted Spout Soap Dispenser.
- Bright-polished Stainless Steel.
- Corrosion Resistant.
- High-impact-resistant ABS body and shank.
- Shatter resistant polyethylene soap dispenser.



Product Code: EXBB-8601
Panel Mounted Soap Dispenser

- Panel Mounted Soap Dispenser.
- Push-in valve dispenses vegetable oil liquid soaps, viscous lotion soaps, and synthetic detergents.
- Valve is operable with one hand, without tight grasping, pinching or twisting of the wrist.
- Equipped with chrome-plated brass cylinder, stainless steel spring, U-packing seal and duckbill.
- Translucent, shatter-resistant polyethylene container.



Product Code: EB 4LR-WWB
Modular 900ML Liquid Soap Dispenser

- Solid, reliable and stylish wall mounted soap dispensers.
- Refillable 900ml reservoir.
- Variety of interchangeable pumps and containers.
- ABS cover and window, glass filled polypropylene back plate.



Product Code: 14.7045.02.011
Soap Dispenser 350ml with Indicator

- D Line Soap Dispenser with indicator and reservoir.
- Outstanding classic Danish design by Knud Holscher.
- Concealed fixing.
- Soap, Lotion or Disinfectant.
- Classic Black Button included, or alternatively, Blue, Green or purple buttons with text included.

Waste Bins



Product Code: ED-77020CB

30 Litre Waste Bin

- Sleek and contemporary design.
- Simple to clean and finger paint resistant.
- Solid durable construction.
- Free standing or wall mounted for extra security.



Product Code: ED-77004CB

14 Litre Waste Bin

- Sleek and contemporary design.
- Simple to clean and finger paint resistant.
- Solid durable construction.
- Free standing or wall mounted for extra security.



Product Code: ED-78962SS

30 Litre (With Lid) Waste Bin

- This bin features a spring loaded lid operation.
- Innovative bag holder which securely retains the bag within the bin.
- Convenient to fix into position due to separate mounting plate.
- Once accurately located, the bin is simply hooked into position, screws inserted and tightened to fully secure the bin into position.



Product Code: ED-84530SS

50 Litre Waste Bin (with Flap)

- Stylish stainless steel waste bin.
- Spring loaded push-flap operation.
- Internal bag strap.
- Free standing or wall mounted for extra security.
- Extremely convenient to fix into position due to separate mounting plate.



Product Code: 14.7097.02.100

Washroom 15Litre Waste Bin (hole access)

- D Line Washroom 15L Waste Bin.
- Open Hole access.
- Use of non-corrosive rust-resistant stainless steel appropriate for high humidity levels in the bathroom setting.



Product Code: 14.7085.02.201

Washroom 20Litre Waste Bin (open top)

- D Line Washroom 20Ltr Waste Bin with Open Top Access.
- Use of non-corrosive rust-resistant stainless steel appropriate for high humidity levels in the bathroom setting.



Product Code: EXBB-532

Circular Waste Shoot

- Circular Waste Shoot for mounting in countertops.
- Type-300 stainless steel with Satin Finish on exposed surfaces.
- Waste shoot opening shall provide access to deposit waste into a waste receptacle placed under the countertop.



Product Code: EXBB-270

Surface Mounted Sanitary Napkin Bin

- Stylish Satin Finish Surface-mounted Sanitary Napkin Bin.
- Type-304 stainless steel with all-welded construction.
- Container fitted with full-length stainless steel piano-hinge.
- Cover flips up for disposal of sanitary napkins and for servicing container.
- Container shall have integral finger depression for opening cover.

Coat Hooks/Door Stops



Product Code: EA-T501 SSS

SS Coat Hook (Buffer)

- Cylindrical coat hook/buffer.
- Concealed rose fixed.
- Comes complete with fixing screws.
- Projection of 65mm.
- Rubber buffer on the end which acts as a door stop and helps prevent damage to the cubicle.



Product Code: EA-T500 SSS

SS Coat Hook (Buffer)

- Cylindrical coat hook/buffer.
- Concealed rose fixed.
- Comes complete with fixing screws.
- Projection of 90mm.
- Rubber buffer on the end which acts as a door stop and helps prevent damage to the cubicle.



Product Code: EA-T510S

SS Coat Hook (Buffer)

- Face Fix Stainless Steel Coat Hook with Rubber Buffer.
- Supplied with wood screw fixings.
- Rubber buffer prevents the hook from damaging the cubicle wall when the door is opened.



Product Code: EA-T521S

SS Hat and Coat Hook (Buffer)

- Face Fix Stainless Steel Coat Hook with Rubber Buffer.
- Supplied with wood screw fixings.
- Rubber buffer prevents the hook from damaging the cubicle wall when the door is opened.



Product Code: 14.5605.02.002

Coat Hook with Pin

- D Line Coat Hook with Pin.
- Non-corrosive rust-resistant stainless steel appropriate for high humidity levels in the bathroom setting.
- Uses AISI 316, marine quality stainless steel.



Product Code: 14.5065.02.126

Wall Door Stop/Coat Hook (14mm x 125 mm)

- D Line wall door stop/coat hook with pin.
- Highest quality stainless steel AISI 316.
- Simple and functional design.
- Advanced technology that ensures the hardware's strength and durability for many years.



Product Code: 14.5050.02.009

Wall Door Stop (21mm x 14 mm)

- D Line wall door stop.
- Highest quality stainless steel AISI 316.
- Simple and functional design.
- Advanced technology that ensures the hardware's strength and durability for many years.



Product Code: 14.5065.02.005

Wall Door Stop/Coat Hook (14mm x 70 mm)

- D Line wall door stop/coat hook with pin.
- Highest quality stainless steel AISI 316.
- Simple and functional design.
- Advanced technology that ensures the hardware's strength and durability for many years.

Grab Rails



Product Code: BX33800

Double Arm Hinged Support Rail

- Bathex Double Arm Hinged Support Rail.
- Practical and durable assistive product.
- Contemporary design.
- Chrome plated and stainless steel.



Product Code: BX33801

Double Arm Hinged Support Rail

- Bathex Double Arm Hinged Support Rail.
- Practical and durable assistive product.
- Contemporary design.
- Chrome plated and stainless steel.



Product Code: BX34910

Double Arm Hinged Support Rail

- Bathex Double Arm Hinged Support Rail.
- Practical and durable assistive product.
- Contemporary design.
- Chrome plated and stainless steel.



Product Code: BX22000

Grab Rail 600 (White)

- Bathex Grab Rail.
- Concealed fixings.
- Practical and durable assistive product.
- Contemporary Design.



Product Code: BX22001

Grab Rail 600 (Blue)

- Bathex Grab Rail.
- Concealed fixings.
- Practical and durable assistive product.
- Contemporary Design.



Product Code: BX30060

Grab Rail 600 (Stainless Steel)

- Bathex Grab Rail.
- Concealed fixings.
- Practical and durable assistive product.
- Contemporary Design.



Product Code: BX21900

Grab Rail 450 (White)

- Bathex Grab Rail.
- Concealed fixings.
- Practical and durable assistive product.
- Contemporary Design.



Product Code: BX21901

Grab Rail 450 (Blue)

- Bathex Grab Rail.
- Concealed fixings.
- Practical and durable assistive product.
- Contemporary Design.



Product Code: BX30055

Grab Rail 450 (Stainless Steel)

- Bathex Grab Rail.
- Concealed fixings.
- Practical and durable assistive product.
- Contemporary Design.

Grab Rails



Product Code: 14.7502.02.853

Fold Down Grab Rail (850 High)

- D Line Fold Down Grab Rail 850 High.
- Satin Stainless Steel finish.
- Simple and functional design
Advanced technology to ensure the hardware's strength and durability.



Product Code: 14.7502.02.703S

Fold Down Grab Rail (700 High)

- D Line Fold Down Grab Rail 700 High.
- Satin Stainless Steel finish.
- Simple and functional design
Advanced technology to ensure the hardware's strength and durability.

Pull Handles



Product Code: 14.4614.02.659

Pull Handle (300mm)

- D Line pull handle.
- Highest quality stainless steel AISI 316.
- Simple and functional design.
- Advanced technology that ensures the hardware's strength and durability for many years.



Product Code: 14.4614.02.306

Pull Handle (650mm)

- D Line pull handle.
- Highest quality stainless steel AISI 316.
- Simple and functional design.
- Advanced technology that ensures the hardware's strength and durability for many years.

excelsior®

washrooms for all environments



Excelsior Panelling Systems approved supplier of Dyson Airblade taps with complementary corian troughs and vanity units. For further details please contact: enquiries@excelsiorps.co.uk

excelsior®

washrooms for all environments

Our Glossary

BIM/Building Information Modelling: 3D collaborative modelling from design to conception encompassing all aspects of a build. Requiring input and management from all trades producing a working model and full data package for the client.

CDF/Compact Density Fibreboard: Compact Density Fibreboard has good water resistance and is extremely resistant to impact. Nominally 12.5mm in sheet thickness with radiused and polished solid black edges. Ideal for use in the harshest of environments such as schools and leisure centres.

CDF is produced using sustainable materials & is 100% recyclable.

Cubicle: A small enclosed space suitable for toilet pan, shower, dressing area.

Duct Panelling: Made to measure panelling system securely hiding pipework, cables, waste and so on providing maintenance access.

HPL/High Pressure Laminate: High pressure laminate (bonded onto a chipboard or MDF substrate). These core materials offer water resistance only, they are not waterproof. HPL is heat, scratch and impact resistant with edges finished with a colour match or contrast 2mm PVC detail. Comfortable in school, office, entertainment, health and retail environments alike.

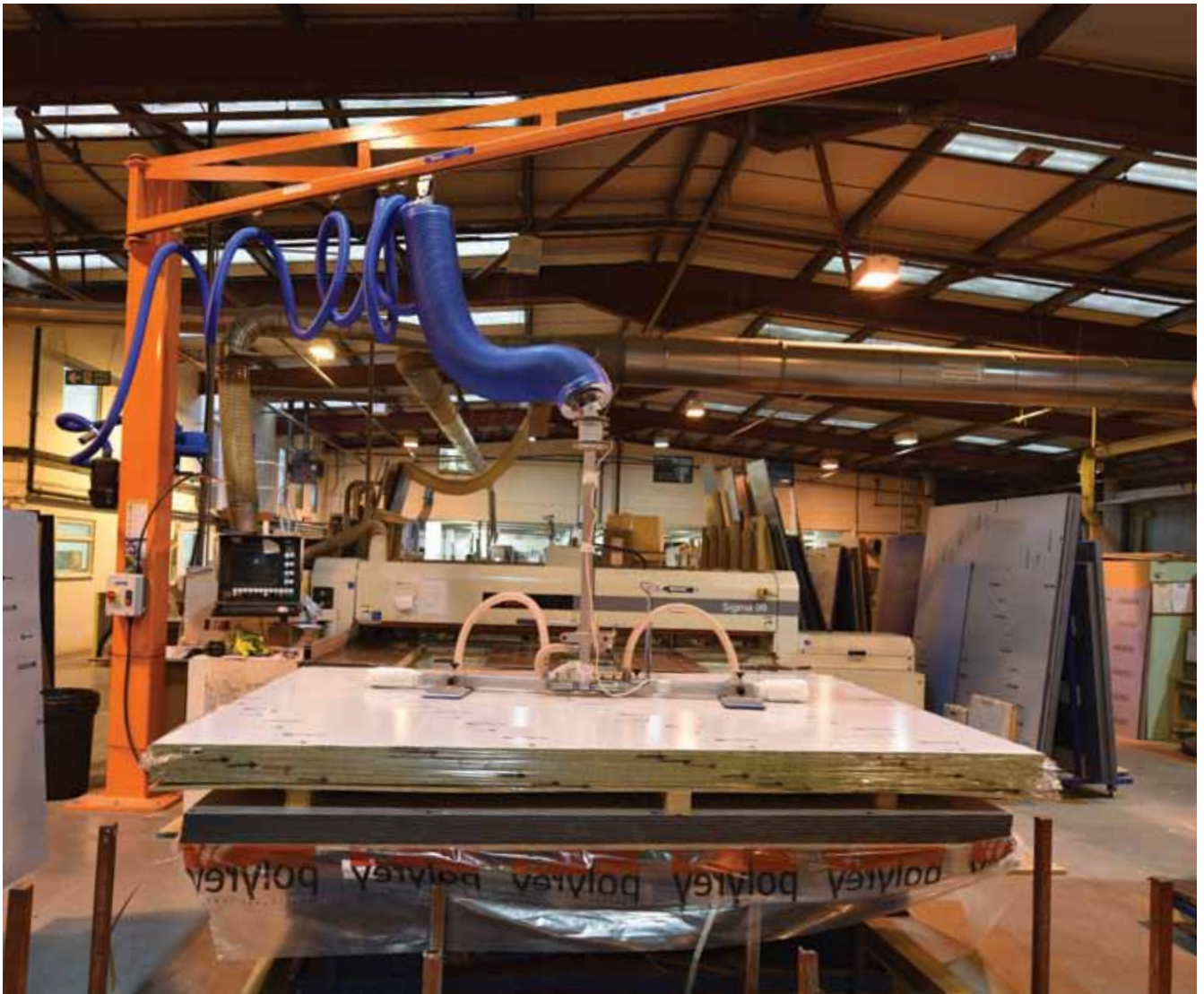
Inset Vanity Basin: Basin is inset into the counter top providing increased countertop surface area suitable for more generously sized washrooms.

MFC/Melamine Faced Chipboard: Melamine faced chipboard is ideally for use in dry environments with a low risk of vandalism. Melamine coated decorative paper is laid directly onto 19mm high density chipboard with panel edges finished in 2mm PVC. Generally a budget driven option.

Semi-Recessed Vanity Basin: Popular in limited space washrooms. Basin placed on vanity unit overhang with a shallower vanity unit below taking up less floor space.

SGL/Solid Grade Laminate: Solid Grade Laminate has high water resistance and extremely resistant to impact. Nominally 12.5mm in sheet thickness with radiused and polished solid black edges. Ideal for use in the harshest of environments such as schools and leisure centres.

Vanity: A structure used to carry wash hand basin and house waste/plumbing equipment.



Excelsior Panelling Systems

With almost 40 years' experience trading in the industry Excelsior have a proven track record of providing a quality product and service. Combined office and manufacturing space over 30,000 sq.ft has ensured cohesion between our vision and realisation of the end product.

Employing over 50 people; supplying and installing our systems throughout the UK and Ireland Excelsior is a trusted name within the washroom market.

Experienced and knowledgeable staff are on hand to offer support and advice to all of our customers both large and small with satisfaction guaranteed.



excelsior[®]

washrooms for all environments

www.excelsior-cubicles.co.uk

Excelsior Panelling Systems Ltd
Unit 2, Woodside Industrial Estate, Pedmore Road, Dudley, West Midlands, DY2 0RL

Tel: +44 (0)1384 267770 **Fax:** +44 (0)1384 482127
E-mail: enquiries@excelsiorps.co.uk **Web:** www.excelsior-cubicles.co.uk



The mark of
responsible forestry
Look for FSC Certified products

