

Washrooms for the Education Sector

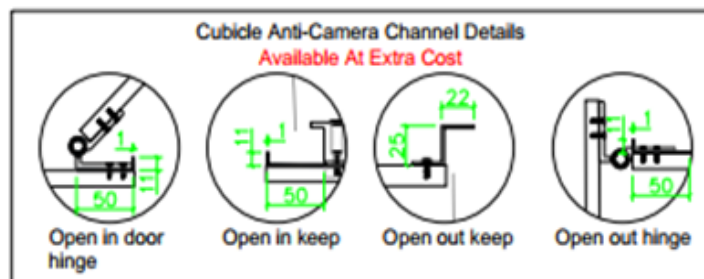
DfE compliant Full height Skyline cubicles:

Available in 12mm Solid Grade Laminate (wet or dry areas) & 20mm High Pressure Laminate (dry areas only).



Bolt through fixings supplied with all hinge packs.
*Not fitted as standard however highly recommended.

Anti-peep channel available at additional cost to reduce any opportunity for camera access.



Washrooms for the Education Sector

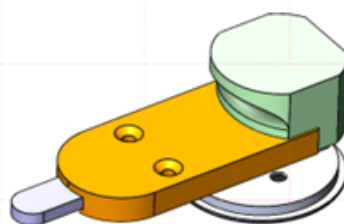
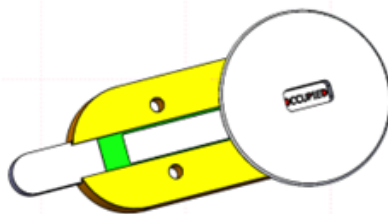
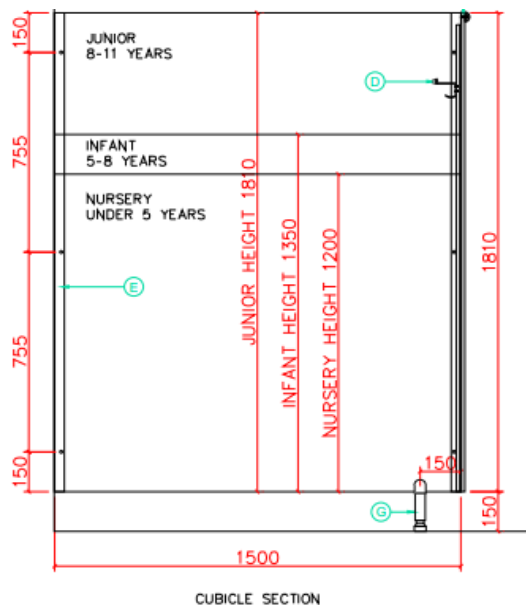
Select & Mariner Range Cubicles available at standard 1960mm height on 150mm Leg:

Available in 12mm Solid Grade Laminate (wet or dry areas) & 20mm High Pressure Laminate (dry areas only).



Harlequin Range Cubicles available in variable heights dependant on age group

Available in 12mm Solid Grade Laminate (wet or dry areas) & 20mm High Pressure Laminate (dry areas only).



STAGE 1 – CHOOSE BASE COLOUR: IPS Flashgaps / Cubicle Divisions & Pilasters / Vanity Underframe

STAGE 2 – CHOOSE DEFINITION COLOURS: IPS Panels / Cubicle Doors / Vanity Tops and Panels

EXCELSIOR BASE GREYS



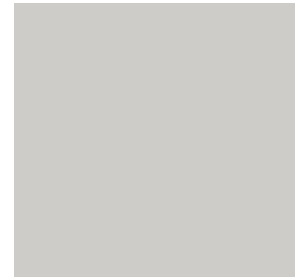
EX031 Dark Grey
LRV0.10



EX048 Mid Grey
LRV0.37



EX004 Soft Grey
LRV0.46

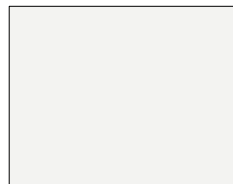


EX088 Light Grey
LRV0.58

WASHROOM COLOURS



U11027 Icy White
LRV0.82



U11209 Royal White
LRV0.81



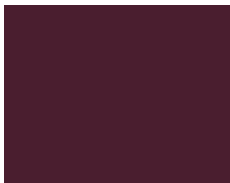
U16020 Cream
LRV0.62



U17005 Carmine Red
LRV0.17



U12000 Volcanic Black
LRV0.05



U17141 Orchidea
LRV0.08



U17500 Royal Blue
LRV0.08



U18001 Powder Blue
LRV0.22



U18002 Water Blue
LRV0.33



U12233 Metallic Black
LRV0.08



U18008 Java
LRV0.25



U18059 Gentian Blue
LRV0.10



U15194 Zinc Yellow
LRV0.65



U16010 Orange
LRV0.35



U18068 Sky Blue
LRV0.20



U19508 Chartreuse
LRV0.51



U18079 Pacific
LRV0.38



U19005 Jade
LRV0.20



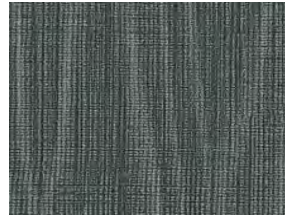
U19008 Labrador
LRV0.12



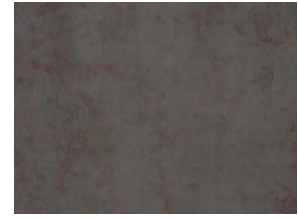
S60030 Mitu Grey
LRV0.25



F73048 Texwood Grey
LRV0.31



F73050 Texwood Black
LRV0.11



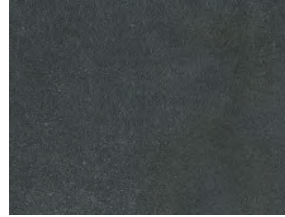
F76006 Tempered Steel
LRV0.13



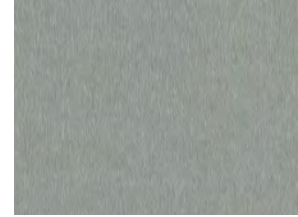
F76044 Balleto Grey
LRV0.46



F76110 Kito Bronze
LRV0.25



F76111 Kito Steel
LRV0.11



F76112 Inox Grey
LRV0.42



R50004 Natural Sangha
Wenge RU
LRV0.11



R50003 Clay Sangha
Wenge RU
LRV0.24



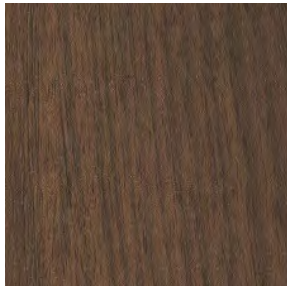
R20038 Natural Chalet
Oak VV
LRV0.29



R20039 Grey Sonoma
Oak RU
LRV0.32



R20320 Silver
Oak RU
LRV0.19



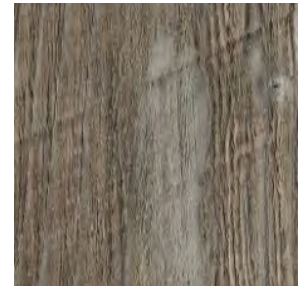
R30135 Okapi Walnut VV
LRV0.13



R34032 Portland Ash Black RU
LRV0.09



R34033 Mountain Ash RU
LRV0.35



R55004 Ponderosa Pine RU
LRV0.27

Pfleiderer Availability Table

Product	SGL		HPL		MFC (MR)	MF HDF
Sheet Size	2800x2070mm	1860x2070mm	3050x1300mm	2800x2070mm	2800x2100mm	2800x2100mm
Thickness	12mm	12mm	0.8mm	0.8mm	19mm	12mm